



## WHAT'S UP AT THE CREEK?

The Community Newsletter of Southcreek Office Park and Town & Country Bank Building

### The 8th Annual Southcreek Fishing Derby...



**will take place—rain or shine—on Saturday, August 15<sup>th</sup>!!** This event is open to all Southcreek Office Park and Town & Country Bank Building tenants, as well as sponsors of the fishing derby.

**The Lake is located in Southcreek behind Buildings IX & X (7400 & 7450 West 130<sup>th</sup> Street).**

There are still sponsorship opportunities available. For more information, please contact Chris Maberry at 913-685-4100 or [chris@ddirealty.com](mailto:chris@ddirealty.com). Let's get ready to fish! *More derby details to follow in July's newsletter...*

### Join Team Humana for Bike MS: Kansas City Ride 2009:

Help raise money for people affected by multiple sclerosis on Saturday, September 26th and Sunday, September 27th. For an overview of the ride and support provided by the MS Society go to: [bikeksg.nationalmssociety.org/site/PageServer?pagename=BIKE\\_KSG\\_homepage](http://bikeksg.nationalmssociety.org/site/PageServer?pagename=BIKE_KSG_homepage). Ride options vary from one to two days with distances of 33 to 185 miles. What you receive as member of Team Humana:

- Humana jersey to every registered team rider.
- Team Humana van will transport your luggage from the Saturday morning start in Peculiar to the overnight in Sedalia and return to the finish back in Peculiar on Sunday.
- Saturday night team cookout in Sedalia.
- Access to limited supply of hotel rooms for those not staying in the campgrounds.

For more team information contact Jerry James ([jjames@humana.com](mailto:jjames@humana.com)) or go to the web address shown above and register as a member of Team Humana.



**Break Time or Lunch...** Three times around the lake on the walking trail will give you bragging rights to having walked a mile!

Also, there are benches and tables situated around the lake for relaxing or eating lunch out on a fine summer day—try it out!



**Welcome 'Harvey' — the latest tree art in Southcreek Office Park. Harvey is ready to be 'seen'! Hop on by Building IX (next to the lake) to view Harvey!**



**Father's Day is June 21st!**

### Happy Anniversary!

The Park is

celebrating the following anniversaries this month. We thank each of you for choosing Southcreek Office Park and Plaza Pointe Nine and look forward to providing many years of quality leasing services and property management to you and your staff...Here's our **June Anniversary Crew!**



**The Travelers Indemnity Co. (6/00)**

**PCS Group, LLC (6/01)**

**Pro Pay (6/03)**

**Flowserve US, Inc. (6/04)**

**TEKSystems, Inc. (6/05)**

**Watko Benefit Group (6/05)**

**Aquaterra Environmental Solutions, Inc. (6/06)**

**JP Financial Services (6/07)**

**Terra Technologies, Inc. (6/07)**

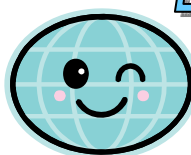
**The Buckle, Inc. (6/07)**

**Affinity Assist Management (6/08)**

**Chemtrade Logistics (US), Inc. (6/08)**

**Event Management International (6/08)**

**Laughter is the closest distance between two people.**



### The Clock Tower Series:

Discover downtown Overland Park with free concerts on Wednesdays and Saturdays (10:30 am-12:30pm) thru October in the Downtown Clock Tower Plaza, 79<sup>th</sup> Street & Santa Fe Drive. For full schedule, visit [www.downtownop.org](http://www.downtownop.org).



June 6, 2009—The Hatchlings—Classic Rock

June 10, 2009—Huki Lau—Hawaiian

June 13, 2009—Danny McGaw—Country

June 17, 2009—Caribbean Express—Calypso

June 20, 2009—Fashionably Late—Indie/Folk

June 24, 2009—Ray Reed—Swing Jazz

June 27, 2009—Valentine & The Ticklers—Classic Rock



**'On Board' at Southcreek...**

Please contact our Property Manager at (913) 685-4100 for more details or to place an item or service onto the board. Although Southcreek Office Park does not recommend, endorse, or warrant any services or products listed, we are pleased to provide this forum for our tenants. Telephone (913) 685-4100, Fax (913) 685-1232, or email us at [ddirealty@ddirealty.com](mailto:ddirealty@ddirealty.com)



**The First Day of Summer is June 21st!**

Following are just a few of the fun events to celebrate the beginning of summer!

- Jazzoo, KC Zoo—[www.jazzookc.org](http://www.jazzookc.org) 6/5/09
- Fiesta Italiana—[www.zonarosa.com](http://www.zonarosa.com) 6/5—6/7/09
- KC Scottish Highland Games—[www.kcscottishgames.org](http://www.kcscottishgames.org) 6/12—6/14/09
- Jazz in the Woods Festival—[www.jazzinthewoods.com](http://www.jazzinthewoods.com) 6/12—6/14/09
- Crown Center Antique Festival—[www.crowncenter.com](http://www.crowncenter.com) 6/13—6/14/09
- Great Lenexa Barbeque Battle—[www.lenexabbq.org](http://www.lenexabbq.org) 6/25—6/27/09
- KC Kansas Street Blues Festival—[www.kckstreetbluesfest.com](http://www.kckstreetbluesfest.com) 6/26—6/27/09

**Discount Tickets...**



- Worlds of Fun tickets: \$28.00
- Junior/Senior tickets: \$15.99
- Oceans of Fun tickets: \$23.00
- Ride & Slide tickets: \$43.00

[www.worldsoffun.com](http://www.worldsoffun.com)



- Silver Dollar City Adult 2-day pass: \$50
  - Silver Dollar City Child 2-day pass: \$40
- [www.silverdollarcity.com](http://www.silverdollarcity.com)



**August 15, 2009!**

**Advertisers This Month Include:**

Please review the attached flyers with special offers extended to readers of this newsletter from the following companies:

- Business Data Security [www.BDSnow.com](http://www.BDSnow.com)
- Award Service Company [www.awardserviceco.com](http://www.awardserviceco.com)
- Overland Park, KS [www.downtownop.org](http://www.downtownop.org)



**New in 2009!** The Southcreek management office is excited to be selling tickets to the Schlitterbahn Vacation Village Waterpark during its inaugural season. The first phase of the Schlitterbahn Vacation Village Waterpark is overflowing with 16 signature attractions encompassing 24 slides and chutes.

Some of the attractions are: The Bahnzai Pipeline – the Black Knight – Blitz Falls Tube Chute – Der Bahn – Henry's Hideout Hot Tub Bar – Kinderhaven Kids' Area – Kristal Beach and River – Loopy Luge – Raging River Tube Chute – Torrent Beach, Cove and River – Wolfpack – and the Storm Blaster (a water coaster)! The Transportainment™ River System minimizes the time spent waiting in line by allowing tubers to travel from one end of the park to the other as they experience multiple attractions without ever leaving the water.

- Adult Ticket = \$29.00 (Gate price is \$35.07)
- Child/Senior = \$25.50 (Gate price is \$29.75)

The season begins sometime in June and runs thru September 20, 2009. This is a great family value, beginning with free parking, free tube rentals, and free lifejackets for children! Picnics are welcome everyday in the park. Guests are permitted to bring their own food and drink inside the park (no glass containers, alcohol or grilling permitted). Food and drink are also available for purchase inside the park.

For more information, please visit them at [www.schlitterbahn.com](http://www.schlitterbahn.com). Check with the management office for ticket availability in mid to late June, 913-685-4100.



**If You Know...** Anyone interested in office space? Please have them contact Elaine Sicht or Kathy Woodward of DDI Commercial, Inc. You may also visit us at [www.ddicommercial.com](http://www.ddicommercial.com). Our offices are located at:

- 7200 West 132<sup>nd</sup> Street, Suite 300,  
Overland Park, KS 66213
- Telephone (913)-685-4100,  
Fax (913) 685-1232,
- E-Mail [ddicommercial@ddirealty.com](mailto:ddicommercial@ddirealty.com)

Don't forget to check out the official website for Southcreek Office Park for the latest pictures, tours of the buildings and grounds (one even in panoramic view!), information about the buildings, or to view the latest newsletter!

[www.southcreekofficepark.com](http://www.southcreekofficepark.com)



**Southcreek Office Park**  
A DEAN DEVELOPMENT INVESTMENT

**Celebrate National Rose Month!**

