



**DDI COMMERCIAL  
INCORPORATED**



## **Southcreek Building XIIB**

7400 W. 132nd St.

Overland Park, KS 66213

### **Available Spaces:**

2nd Floor = 2,706 rentable square feet

2nd Floor = 5,666 rentable square feet

**Close to Deer Creek Woods Shoppes**

### **Floor Plans on Reverse**



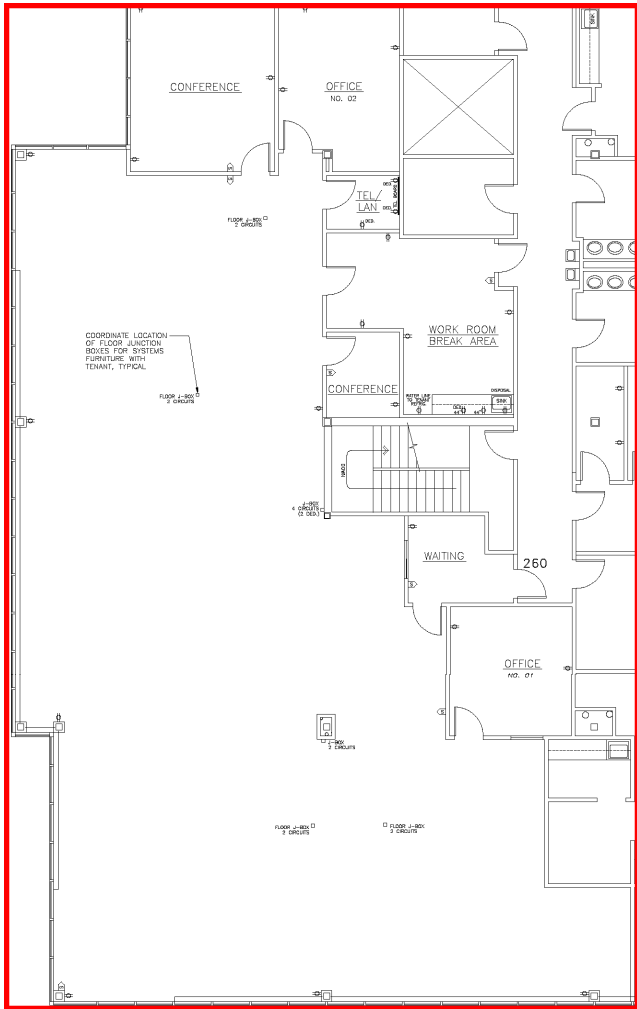
**Elaine Sight & Kathy Woodward, SIOR  
Commercial Realtors**

7200 W. 132nd St., Suite 300  
Overland Park, KS 66213  
Phone: 913-685-4100  
Fax: 913-685-1232

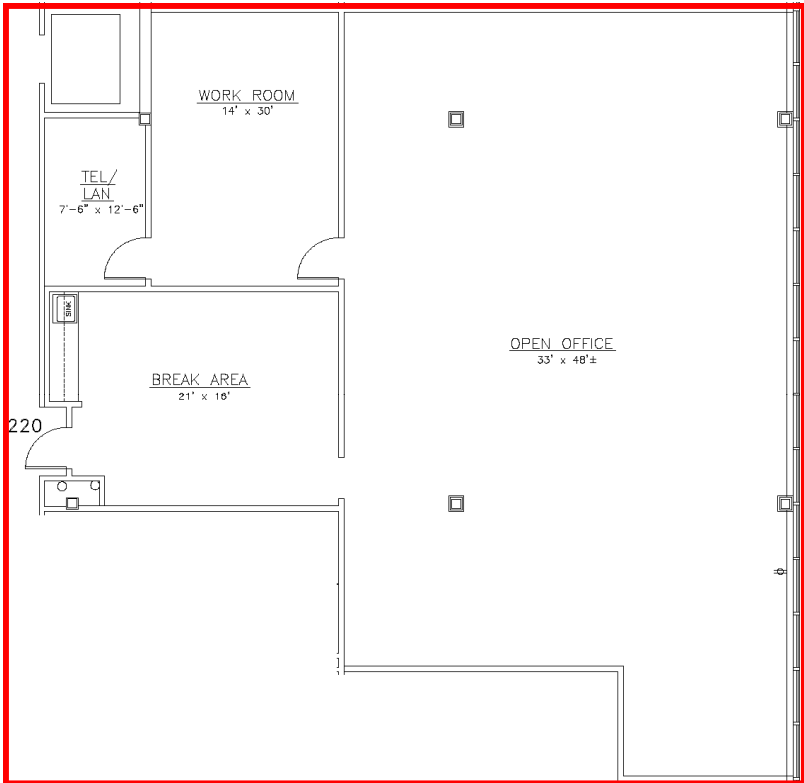
[ddicommercial@aol.com](mailto:ddicommercial@aol.com)  
[www.southcreekofficepark.com](http://www.southcreekofficepark.com)



**Southcreek Office Park**  
A DEAN DEVELOPMENT INVESTMENT



**5,666 rentable square feet**



**2,706 rentable square feet**