



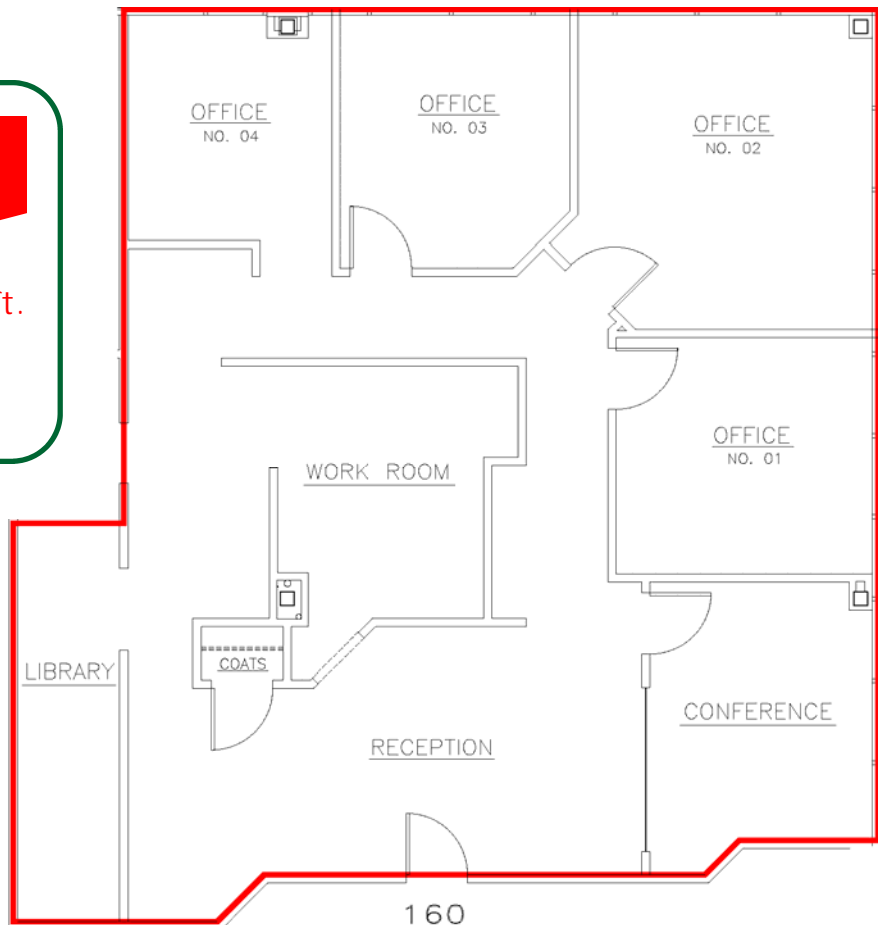
**DDI COMMERCIAL
INCORPORATED**

**Southcreek Building X11A
7200 W. 132nd, OPKS**

For Lease

1,915 rentable sq. ft.

1st floor space



DDI COMMERCIAL, INC.

Elaine Sicht & Kathy Woodward, SIOR
7200 W. 132nd St. - Suite 300
Overland Park, KS 66213

Phone: 913.685.4100
Fax: 913.685.1232
E-mail: ddicommercial@aol.com
Web: www.southcreekofficepark.com