



**DDI COMMERCIAL
INCORPORATED**

Terrific Three Story!

**Southcreek Building XVII
7285 W. 132nd St., OPKS**

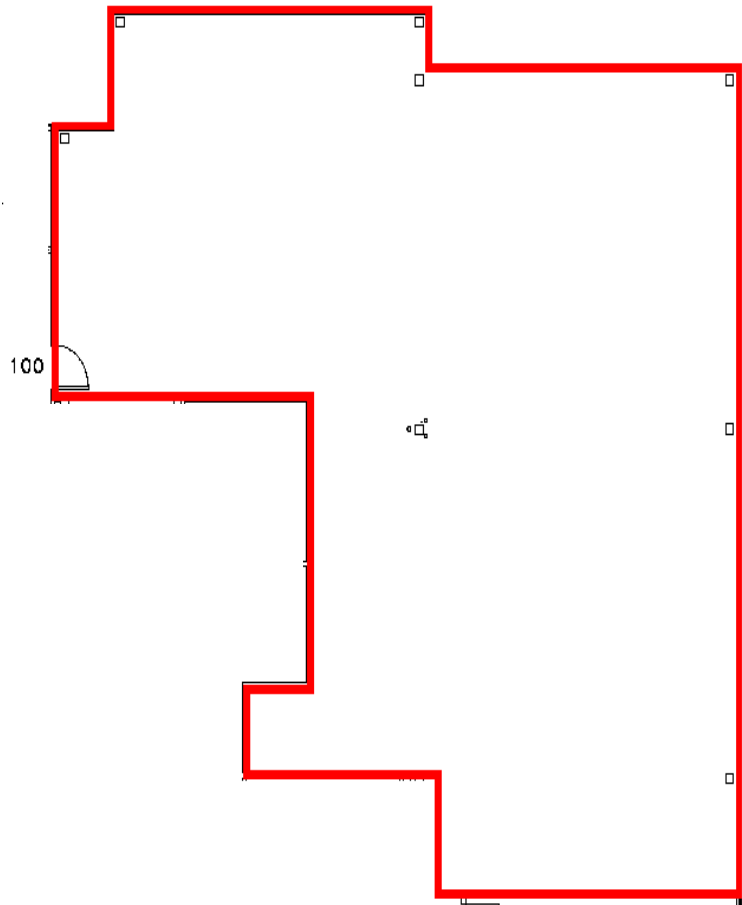
For Lease

3,081 rentable sq. ft.

First floor space

Fabulous floor to
ceiling windows

1st generation space



DDI COMMERCIAL, INC.

Elaine Sicht & Kathy Woodward, SIOR
7200 W. 132nd St. - Suite 300
Overland Park, KS 66213

Phone: 913.685.4100
Fax: 913.685.1232
E-mail: ddicommercial@aol.com
Web: www.southcreekoofficepark.com