



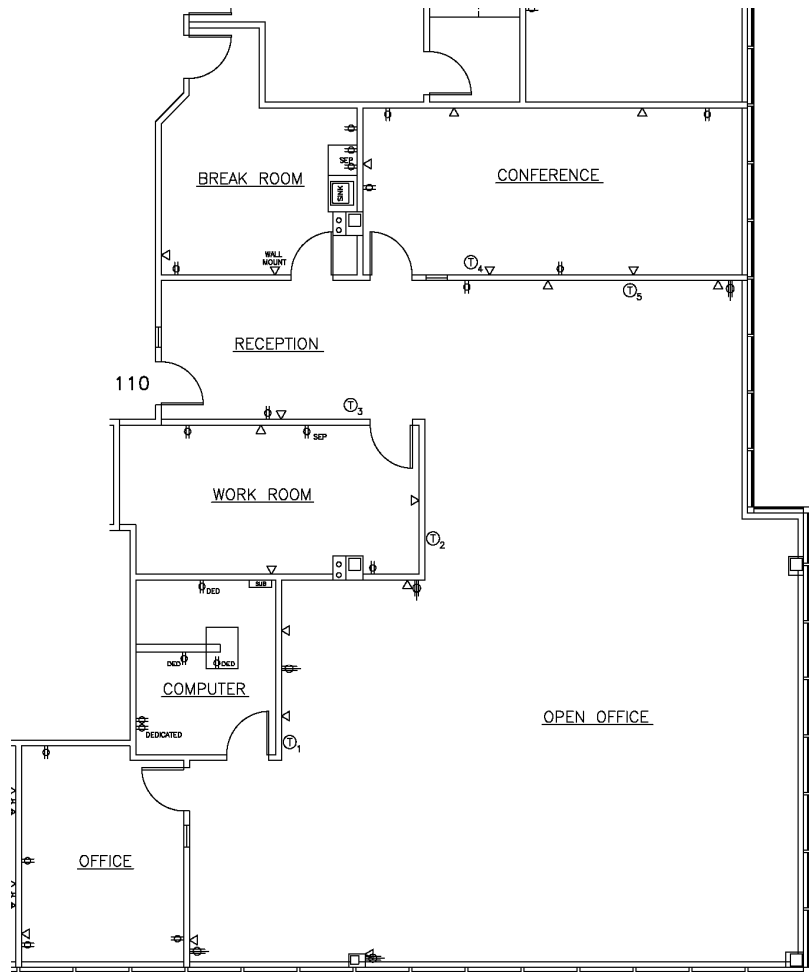
**DDI COMMERCIAL
INCORPORATED**

Great Space!

**Southcreek Building IVa
7301 W. 129th St., OPKS**

3,263 Sq. Ft.

- Available immediately
- Competitive lease rates
- Great 1st floor space with furniture
- Located next to lake
- Close to Deer Creek Woods Shoppes



DDI COMERCIAL, INC.

Elaine Sicht & Kathy Woodward, SIOR
7200 W. 132nd St. - Suite 300
Overland Park, KS 66213

Phone: 913.685.4100
Fax: 913.685.1232
E-mail: ddicommercial@aol.com
Web: www.southcreekofficepark.com