



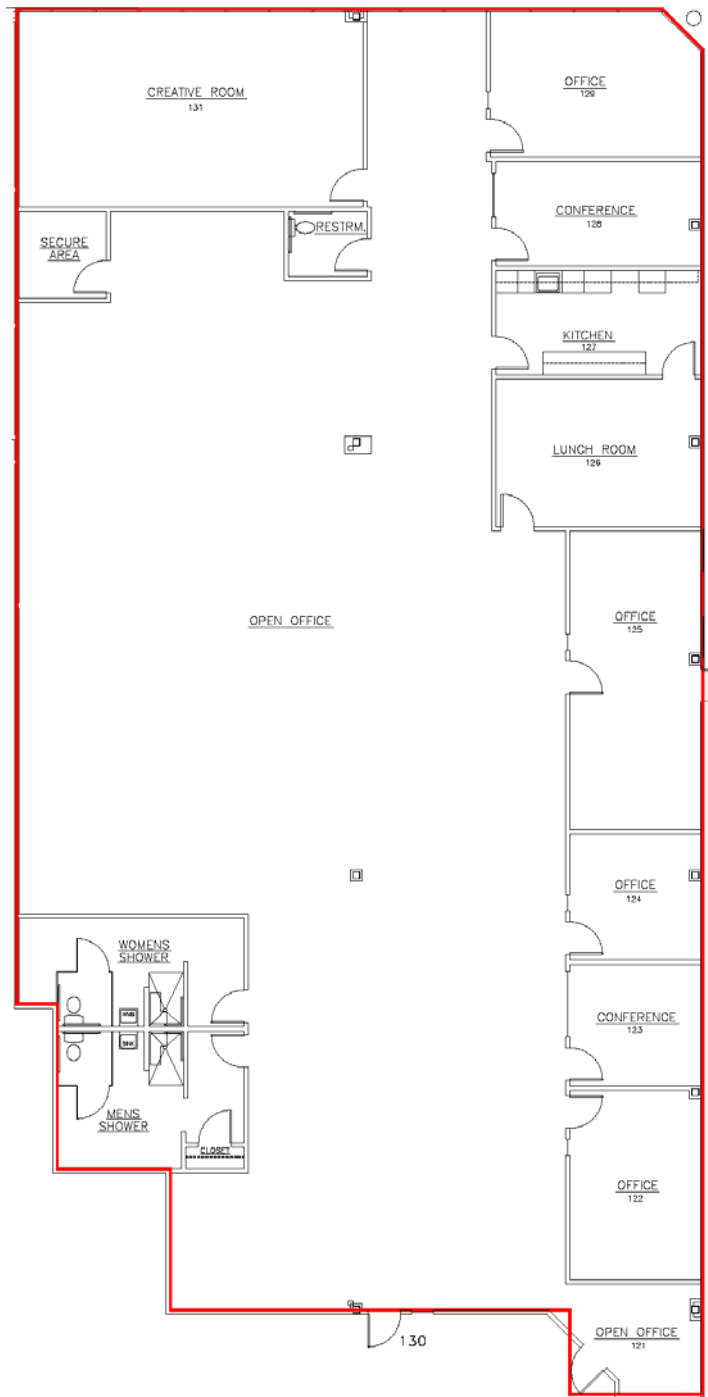
**DDI COMMERCIAL
INCORPORATED**

For Lease

Unique Opportunity!

**Southcreek Building VII
7311 W. 130th St., OPKS**

- 8,297 rentable sq. ft.
- Restrooms with showers
- Lots of windows
- Please call for a tour



DDI COMERCIAL, INC.

Elaine Sicht & Kathy Woodward, SIOR
7200 W. 132nd St. - Suite 300
Overland Park, KS 66213

Phone: 913.685.4100
Fax: 913.685.1232
E-mail: ddicommercial@aol.com
Web: www.southcreekoofficepark.com