



WHAT'S UP AT THE CREEK?

The Community Newsletter of Southcreek Office Park



Community Member Spotlight: Our newest Southcreek Office Park neighbor—Scheels—would like to share the following:

“Located on 135th & Metcalf in Overland Park, Scheels is excited to bring 220,000 feet of retail shopping excellence to the Corbin Park Shopping Center in late summer 2015! The Scheels retail shopping experience will showcase the state’s largest selection of sports, sportswear and footwear under one roof. Unlike a typical sporting goods or department store, Overland Park Scheels will be a collection of entertainment venues, developed to keep every customer inspired.

SCHEELS® Overland Park Scheels will employ over 400 associates. Scheels provides the best training and benefits in retail for its career associates. The people at Scheels make it special. Scheels is an employee-owned, privately held business that owes its consistent success to its empowered associates, leaders and partners who think and make decisions for their individual store and the entire company.

Overland Park Scheels is scheduled to open on June 27, 2015. For career opportunities in Overland Park, please visit our Scheels Career Center located at 7200 West 132nd Street, Suite 100, Overland Park, KS, 66213. Check out our attached flyer for more information about Scheels!

Advertiser’s Specials... Please review the attached flyers with special offers extended to readers of this newsletter from the following companies:

Coulter Chiropractic	www.coulterchiropractic.com
Natalie’s A.R.T. Foundation 5K	www.nataliesart.org
Renaissance Festival	www.kcrenfest.com
Sprint Center	816.949.7149
Tobler’s Flowers	www.toblers.com

Tax-Free Weekend: The Back to School Sales Tax Holiday in Missouri begins at 12:01 a.m. on Friday, Aug. 1, 2014 and runs through midnight, Sunday, Aug. 3, 2014.



Certain back-to-school purchases, such as clothing, school supplies, computers, and other items as defined by the statute, are exempt from sales tax for this time period only. For more detailed information and to find out which cities have opted out for this year, please visit <http://dor.mo.gov/business/sales/taxholiday/school/consumers.php>.

Happy Anniversary!

The Park is celebrating the following anniversaries this month. We thank each of you for choosing Southcreek Office Park and look forward to providing many years of quality leasing services and property management to you and your staff... Here’s our **August** Anniversary Crew!



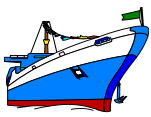
- Thompson’s Search Consultants, Inc. (8/96)**
- Actuate Corporation (8/97)**
- Westwood Professional Svcs., Inc. (8/99)**
- Winchester Air Express, Inc. (8/05)**
- Paramount Growers Coop., Inc. (8/06)**
- Twin Feathers Consulting, Inc. (8/06)**
- Berkshire Risk Services, LLC (8/08)**
- The Guardian Life Ins. Co. of America (8/08)**
- Adventure Tech Group, Inc. (8/09)**
- Soleran, Inc. (8/09)**
- The Cowell Law Firm, LLC (8/11)**
- Arise CPA Services, LLC (8/12)**
- Skyward Land Services, Inc. (8/13)**
- Wellington Promotions (8/13)**



Please Join Us in Welcoming:

The following tenants have recently arrived or will be arriving within the next couple of months. We are honored to have them join us here in Southcreek!

- Gemini Financial Advisors (7/14)**
- BWTP, P.C. (9/14)**
- Goodman Networks, Inc. (9/14)**
- MC Bellomo, P.A. (9/14)**
- Uniformed Services Benefit Assn. (11/14)**



‘On Board’ at Southcreek...

Please contact our Property Manager at (913) 685-4100 for more details or to place an item or service onto the board. Although Southcreek Office Park does not recommend, endorse, or warrant any services or products listed, we are pleased to provide this forum for our tenants. Telephone (913) 685-4100, Fax (913) 685-1232, or email us at ddirealty@ddirealty.com.

Need Space? We are always looking for new tenants like you to join our family at Southcreek Office Park. If you or anyone you know is looking for office space, please contact Elaine Sicht or Kathy Woodward, SIOR of DDI Commercial, Inc. Our website has the latest properties for lease at www.SouthcreekOfficePark.com.

If you are needing real estate outside of Southcreek Office Park, please call for a listing of other properties Kathy or Elaine to discuss our inventory.

DDI Commercial, Inc. is located at:
7200 W. 132nd St., Suite 300,
Overland Park, KS 66213
Telephone (913) 685-4100
Fax (913) 685-1232

Elaine@ddirealty.com
KathyW@ddirealty.com



Fun events taking place around the area:

- 07/30—08/03: Leavenworth County Fair www.visitleavenworthks.com
- 08/02—08/04: Festival of Butterflies www.powellgardens.org
- 08/03: Superhero Weekend: Spider Man/Iron Man www.kansascityzoo.org
- 08/04: Superhero Weekend: Captain America/Thor www.kansascityzoo.org
- 08/06—08/10: Johnson County Fair www.jocokansasfair.com
- 08/08—08/18: Missouri State Fair www.mostatefair.com
- 08/09—08/10: Great Midwest Balloon Fest www.greatmidwestballoonfest.org
- 08/09—08/11: Festival of Butterflies www.powellgardens.org
- 08/16—08/18: Ethnic Enrichment Festival www.eeckc.org
- 08/23—08/25: Parkville Days—Rockin’ on the River www.parkvillemo.org
- 08/30—09/01: KC Irish Fest www.kcirishfest.com



School Days: Can you believe it is already time for the kids to return to school? This summer seems to have simply flown by.

Several school districts in and around the metro area are scheduled to begin classes later this month.



Please drive safely within all school zones!

Hear Ye, Hear Ye: Tickets to the Renaissance Festival will be available at the Southcreek management office by mid-August! Also, this year we are also offering special internet savings if you can’t make it to our office. We are delighted to offer these services to our tenants again this year!

Tickets: Adults = \$15.50; Children = \$9.50 [5-12 years old]

Gate Prices: Adults = \$20.95; Child = \$11.95

DDI Internet Corporate Code = DDI2014

DDI Internet prices: Adults = \$18.25; Children = \$11.00

For more information or to purchase DDI Internet Tickets, please see the attached flyer and visit www.krenfest.com for times and dates of operation.

2nd Annual Martini Madness--The Olive Run.

Olive Drew was a retired teacher who began running at age 80 and continued until 93. Funds from the 5K race will provide scholarships in her memory for students of District #313 (where she taught) who wish to pursue a career in education. With this race we celebrate all those who have more life in their years thanks to running.



It's on August 17th, Sunday, at 4:00 PM. Location is The Other Place--Olathe at 16590 W. 135th, Olathe, KS 66062. Registration is at www.raceit.com with more information at www.patriotsrun.org. Olive you join us!

Huzzah: Enjoy some fun at one or more of the seven themed weekends during the Renaissance Festival this year!



- 08/30—09/01 = Pirates Ale Fest
- 09/06—09/07= Shamrocks & Shenanigans
- 09/13—09/14 = Pet Fest
- 09/20—09/21 = Highland Games
- 09/27—09/28 = Wine, Chocolate & Romance
- 10/04—10/05 = Wonders of the World
- 10/11—10/12 = Oktoberfest
- 10/13 Columbus Day = Harvest Huzzah

Natalie's A.R.T. Foundation

www.nataliesart.org | www.facebook.com/nataliesfoundation



5K & FUN RUN

When: Sat, September 6, 2014 **Where:** Southcreek Office Park

7200 W 132nd St

Time: 7:45am - Warm Up

Overland Park,

8:00am - 5K Start

KS, 66213



5K Run/Walk and a kids Fun Run. Includes Chris Cakes breakfast for race participants! Additional breakfast tickets available.

Register with this QR code or visit www.nataliesart.org

Cancer is a word no one ever wants to hear. It is even worse when a doctor says it while diagnosing your child. That's what happened to us on August 26, 2012. For the 8 plus months that followed, our daughter Natalie fought her disease with courage, determination and grace. Unfortunately there have been no significant advancements in the treatment of childhood brain cancer over the past 30 years and Natalie didn't live to celebrate her 9th birthday.

It is with this in mind that we have established Natalie's A.R.T. Foundation, honoring her memory by **Raising Awareness, Funding Research** and **Improving the Treatment** experience for children battling cancer, as well as their families.



Natalie's Art Work

bread & butter concepts

GRAM & DUN.

BRGR
KITCHEN + BAR

URBAN TABLE

TACO REPUBLIC

Bank of Blue Valley

GARMIN.

INTOUCH SOLUTIONS.

CIG INC.

Highland Park



SCHEELS®



Located on 135th & Metcalf in Overland Park, Scheels is excited to bring 220,000 feet of retail shopping excellence to the Corbin Park Shopping Center July 27th 2015.

The Scheels retail shopping experience will showcase the state's largest selection of sports, sportswear, fashion clothing and footwear under one roof. Unlike a typical sporting goods store or department store, Overland Park Scheels will be a collection of entertainment venues, developed to keep every customer inspired.

Modeled after Scheels stores in Fargo, ND; Springfield, IL; and Sandy, UT; the Scheels in Overland Park will feature specialty shops ranging from technical running gear and the latest fashion clothing, to spectacular hunting and fishing shops. The sport shoe, hiking boot, and casual footwear selection will be the largest in Overland Park with everything for toddlers to all athletes, from serious hikers to beach goers, and from hunters to the fashion conscious. There will be a world class golf shop, bike shop, ski shop, canoe and kayak shop, and fishing shop. The gun and hunting shops will have the largest selection of guns in Kansas, ranging from everyday shooters, to premium sporting guns.

Special attractions will include a huge 16,000 gallon aquarium, a 65-foot, 16-car, operating Ferris wheel, photo opportunities, a wild-life mountain, shooting galleries, and laser shot shooting simulators. Customers will be able to test their golf, soccer, hockey, baseball, football and basketball skills on the sport simulators. There will be a walk of US Presidents featuring two fully animated, talking presidents. No shopping experience would be complete without tasty treats; Scheels deli and fudge shop, named Gramma Ginna's, will serve gourmet soups and sandwiches, Starbucks® coffee and specialty drinks, 24 flavors of homemade fudge, and 18 flavors of gelato, which will make the shopping adventure something unlike the Overland Park retail customer has ever experienced.

Scheels stores offer a complete Service Shop with services ranging from bike repairs and skate sharpening to ski/board waxing and racquet stringing. Each Scheels store has an in-house service technician team to get your gear ready for the season. Our Barnett-certified technicians have received the best bike mechanic training in the industry.

Overland Park Scheels will employ over 400 associates. Scheels provides the best training and benefits in retail for its career associates. The people at Scheels make it special. Scheels is an employee-owned, privately held business that owes its consistent success to its empowered associates, leaders and partners who think and make decisions for their individual store and the entire company.

Three acres of potatoes were the seed for the first Scheels store in 1902. Frederick A. Scheel, a German immigrant, used the \$300 he earned from that first harvest of potatoes as the down payment on the first Scheels, a small hardware and general merchandise store in Sabin, Minnesota. Over the years, Scheels opened in surrounding communities, including Fargo, North Dakota, where the Corporate Office is now located. Firmly planted in the hardware business, Scheels started adding a small selection of sporting goods to their stores in 1954. Customer interest grew, and more and more sports lines were added with athletic shoes and clothing being introduced in the Scheels' product mix in 1972.

Scheels is a 25-store operation with stores in 10 states including North Dakota, Iowa, Minnesota, South Dakota, Montana, Wisconsin, Nebraska, Nevada, Illinois, and Utah. Overland Park Scheels will be store No. 26, with Kansas being its eleventh state of operation. The store that opened in 2008 in the Reno/Sparks, Nevada market is the World's Largest All Sports Store. Providing Scheels' customers with first-class customer service and the world's largest selection of sports, sportswear and footwear are the priorities throughout the organization. Currently, Steve D. Scheel, the great grandson of Scheels' Founder Frederick A. Scheel, is Scheels CEO and oversees the company of over 5,000 associates. His Son, Steve M. Scheel, is the company's President and has been working for Scheels since 1989.

Scheels will open 2 new stores in 2015, Rochester MN and Overland Park KS. The Scheels in Rochester MN is scheduled to open April 12th 2015 and the Overland Park KS store is scheduled to open on June 27th 2015. For career opportunities, in Overland Park, please visit our office at Scheels Career Center 7200 W. 132nd street Overland Park KS. 66213.

2014 Kansas City Renaissance Festival

Open Weekends
August 30 through October 13, 2014
Plus Labor Day & Columbus Day
10am to 7pm • Rain or Shine
Free Parking! • 913.721.2110

Festival Site Address:
633 N. 130th Street
Bonner Springs, KS 66012

ADULT:

\$17 per ticket plus a
\$1.25 convenience
fee

TOTAL: \$18.25



CHILD:

\$10 per ticket plus a
\$1.00 convenience
fee

TOTAL: \$11.00

Welcome to the Kansas Renaissance Festivals Corporate
Partners TicketFly program!

Your corporate code is **DDI2014**
(not case sensitive)

Go to www.krenfest.com, & click on the gold banner in
upper right corner. By doing this, it will link you to the
TicketFly page. Click the box that states Buy Tickets Now.
Scroll to bottom of page where it says Promo Code. Enter
your company code given above and click apply code. Once
that is done, a new screen will load with the Corporate
Ticket options. Please feel free to call the office if you are
having problems with your purchase and one of our sales
associates will be happy to assist.

913-721-2110 sales@krenfest.com

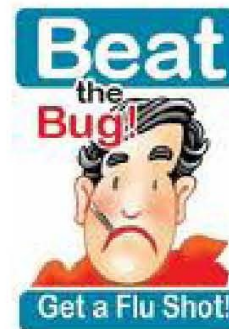
2014 Seasonal Flu Shot

Protect yourself, your family, friends, and coworkers!

*Flu is a serious contagious disease that can lead to hospitalization and even death. The CDC has determined that the flu leads to 200,000 hospitalizations and 36,000 deaths a year. Each flu season, different flu viruses spread and affect people differently based on their body's ability to fight infection. Even healthy children and adults can get very sick with the flu and spread it to friends, co-workers, and family even before they have any symptoms. In 2009–2010, a new and very different flu virus (called [2009 H1N1](#)) spread worldwide causing the first flu pandemic in more than 40 years. This strain affects **healthy young adults (ages 18-49)**. It is included in the flu shot again this year. Last year, H1N1 was the strain that predominated the flu season (first season since 2009) and we saw the peak of the flu season (December/early January) to be earlier than most years.*

Preventing Seasonal Flu: Get Vaccinated

The single best way to prevent the flu is to get a flu vaccine each season. CDC recommends a yearly [flu vaccine](#) for everyone as the first and most important step in protecting against this serious disease. About two weeks after vaccination, antibodies develop that protect against influenza virus infection. Flu vaccines will not protect against flu-like illnesses caused by non-influenza viruses. According to the Mayo Clinic, "the vaccine's effectiveness is usually strongest during the first six months after receiving a flu shot. After that, the strength of the protection it provides begins to diminish." The 2012-2013 flu season saw 6.6 million illnesses, 3.2 million medical visits and 79,000 hospitalizations prevented by flu vaccinations!



Who Should Get Vaccinated?

On February 24, 2010 vaccine experts voted that **everyone 6 months and older should get a flu vaccine each year** starting with the 2010-2011 influenza season. While everyone should get a flu vaccine each flu season, it's especially important that certain people get vaccinated either because they are at high risk of having serious flu-related complications or because they live with or care for people at high risk for developing flu-related complications. Even healthy people can get the flu and it can be serious! The few minutes it will take you to get a flu vaccine can help prevent missed days from work or school due to being sick with the flu.

What vaccine will be given this year, do I need it and is it safe?

While there are many different flu viruses, the flu vaccine is designed to protect against the main flu strains that research indicates will cause the most illness during the flu season. The 2014-2015 three strain flu vaccine contains the following strains: A/California/7/2009 H1N1 virus, A/Texas/50/2012 H3N2 virus, and B/Massachusetts/2/2012. Even if you were vaccinated against the flu last season, **you still need a flu vaccination THIS SEASON** because immune protection from vaccination declines over time.

Does the flu vaccine cause the flu?

Contrary to popular belief, the flu vaccine does NOT cause the flu. Some people experience mild flu-like symptoms after vaccination, which can mean that your body is responding to the vaccine. If you do get the flu soon after vaccination, you may have been exposed to flu viruses either before getting vaccinated or within the two weeks it takes the body to gain protection after getting vaccinated. Also, it is possible to that your symptoms are not caused by flu. Other respiratory viruses, like the common cold, and some bacteria can cause symptoms similar to those caused by flu.

When will flu activity begin and when will it peak?

The timing of flu is very unpredictable and can vary from season to season. Flu activity most commonly peaks in the U.S. in January or February, However, seasonal flu activity can occur as early as October and as late as May.

Good websites for further information are available at www.cdc.gov/flu and www.flu.gov



913-345-2223



Discount Program for Southcreek Office Park:

- 15% Discount for in town and out of town flower deliveries
- Please use Discount Code: SOP15 when you place your order at either of our websites or when you call into our shop

Home Office -Downtown

- 2010 East 19th Street, Kansas City, Missouri 64127
- Phone - **816-241-6150 or 913-491-4800**
- Hours - 7 AM to 5 PM Monday through Friday
Hours – 8 AM to 4 PM Saturday and Sunday
- Same day delivery if order is in by 2 PM (Emergencies-we can try to work magic)
- We design and deliver 7 days a week.

When placing your orders:

- Call us at 816-241-6150 or 913-491-4800 -anyone can help.
- Email us at: customerservice@toblers.com
- Use the web sites:
 1. FTD - www.toblers.com
 2. Teleflora - www.toblersflorist.com
- Once we have the order in the system, please provide an email address and we will send you an order confirmation.

Download our Free Floralapp – Order quickly and easy from your tablet or phone

- Go to iTunes for iOS (iPhone/iPad) or GooglePlay for Android – download Floralapp
- When prompted put in Toblers Code: 2416150
- Order flowers quick and easy on the go!



Special Offers

A \$3 per ticket fee will apply on each offer. While supplies last.

Call Jake at 816.949.7149 or email jriha@sprintcenter.com



RBBB Circus: Save \$5/ticket

9/11 7pm, 9/13 11am & 9/14 1 & 5pm

Full Price: \$24 Discount Price: \$19

Full Price: \$17 Discount Price: \$12

To order: tiny.cc/circuskc Promo code: **property**

\$12 child ticket is valid on 9/11, 9/13 (11am) & 9/13(5pm) Call Jake for BOTH adult/child tickets

Deadline: Sept. 2 (Ages 2 & up require a ticket)



Dallas Stars vs. St. Louis Blues

Saturday, 9/27 7PM

Full Price: \$113 Discount Price: \$103

Full Price: \$68 Discount Price: \$48

Full Price: \$28 Discount Price: \$23

To order: tiny.cc/nhlkc Promo code: **property**

Deadline: Sept. 19 (All ages require a ticket)



Miami HEAT vs. Golden State Warriors

Friday, October 17 @ 7:30 PM

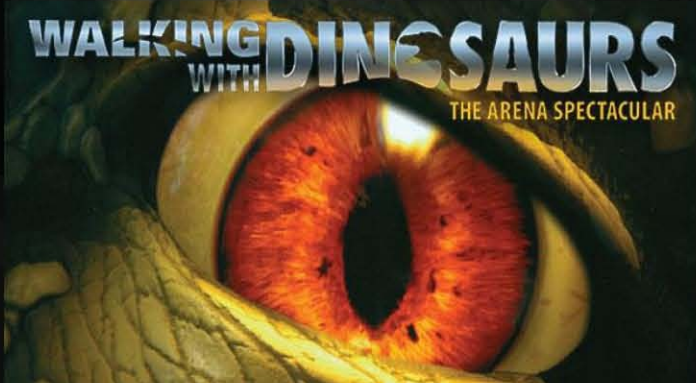
Full Price: \$83 Discount Price: \$68

Full Price: \$53 Discount Price: \$43

Full Price: \$33 Discount Price: \$28

To order: tiny.cc/nbake14 Promo code: **property**

Deadline: Oct. 10 (All ages require a ticket)



Walking with Dinosaurs

**Friday, Nov. 7 @7PM, Saturday, Nov. 8 @11AM,
3PM & 7PM, Sunday, Nov. 9 @ 1PM & 5PM**

Full Price: \$74.50 Discount Price: \$64.50

Full Price: \$61.50 Discount Price: \$51.50

Full Price: \$51.50 Discount Price: \$41.50

Full Price: \$31.50 Discount Price: \$21.50

To order: tiny.cc/wwdke Promo code: **property**

Deadline: Aug. 29 (Ages 2 & up require a ticket)



COULTER

CHIROPRACTIC

MOBILE CHIROPRACTIC CARE

CHIROPRACTIC CARE
is **BUILT** on
Health and Wellness

AREAS OF SPECIALIZATION

- Headaches & Migraines
- Low/Mid Back Pain
- Neck Pain
- Carpal Tunnel
- Pelvic Pain
- Arthritis Prevention
- Nutrition Support
- Trigger Point Therapy
- Injury Prevention
- Ergonomics & Posture



CHIROPRACTIC
at **WORK**

Reduce Work-Related Injuries

Lower Healthcare Costs

Boost Productivity

Less Sick Days

Decrease Workplace Stress

SOUTHCREEK SPECIAL!

\$65

**Initial Exam and
First Treatment**

Valued at over \$200!
(x-rays not included)

NO CASH VALUE. REDEEMABLE ONLY FOR SERVICES OFFERED.