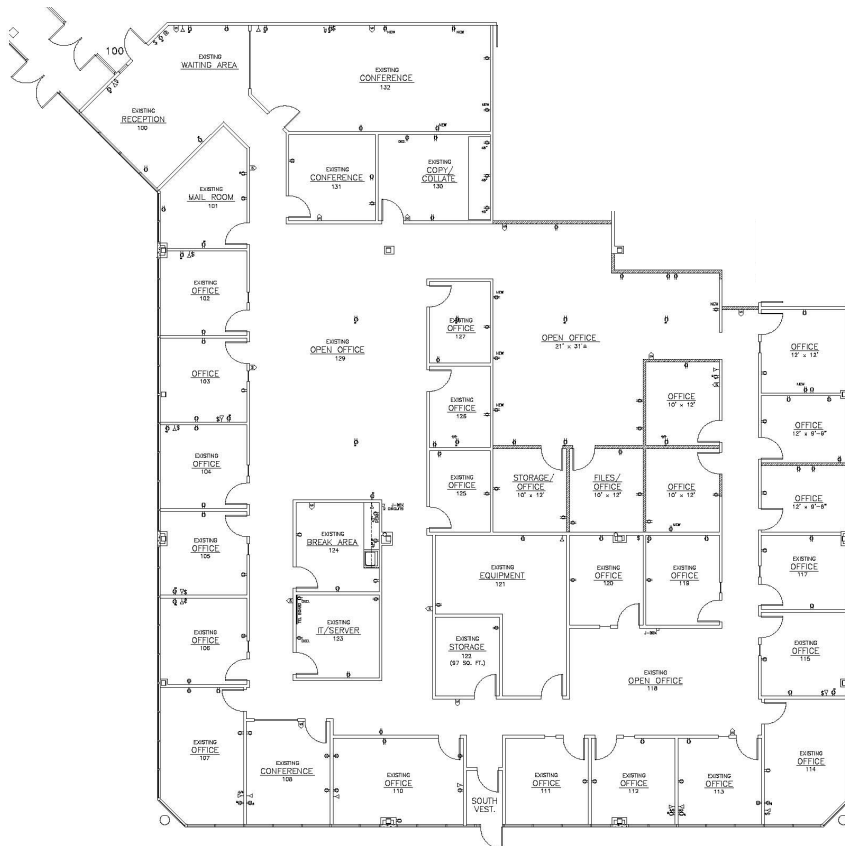




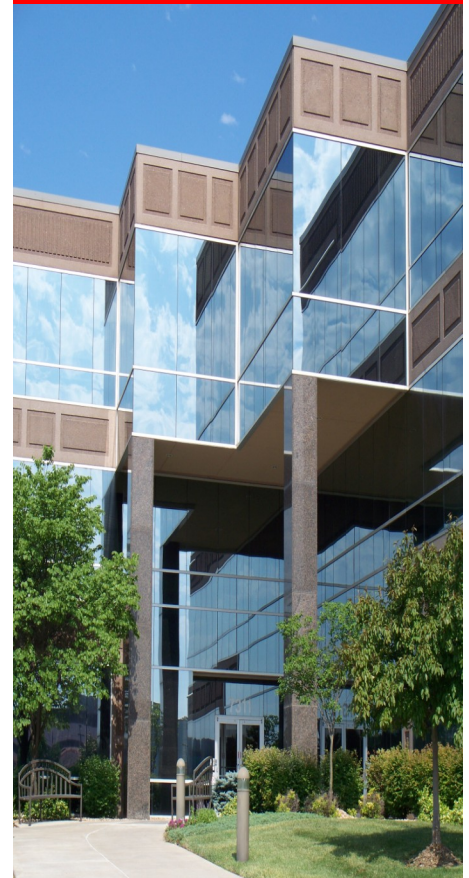
**Building VII—7311 W. 130th St.**

**10,150 sq. ft.**



- \* On-site leasing, management & ownership
- \* Cost-effective building designs
- \* Professional floor plan development
- \* Custom interior design services
- \* General contracting by Southcreek
- \* Flexible expansion options
- \* Convenient parking
- \* Excellent location
- \* Beautiful park settings
- \* Commitment to your needs

**Available August 2018**  
**Lots of Offices on Glass**  
**Exterior Building Signage Available**  
**Close to Corbin Park Retail Village & Shoppes at Deer Creek Woods**  
**On Site Management**



**Elaine Sicht**  
**Kathy Woodward, SIOR**  
**DDI COMMERCIAL, INC.**  
 7200 West 132nd Street  
 Suite 300  
 Overland Park, KS 66213  
 P: 913.685.4100  
 F: 913.685.1232

[Elaine@DDIRealty.com](mailto:Elaine@DDIRealty.com)  
[KathyW@DDIRealty.com](mailto:KathyW@DDIRealty.com)  
[DDICommercial@DDIRealty.com](mailto:DDICommercial@DDIRealty.com)  
[www.SouthcreekOfficePark.com](http://www.SouthcreekOfficePark.com)