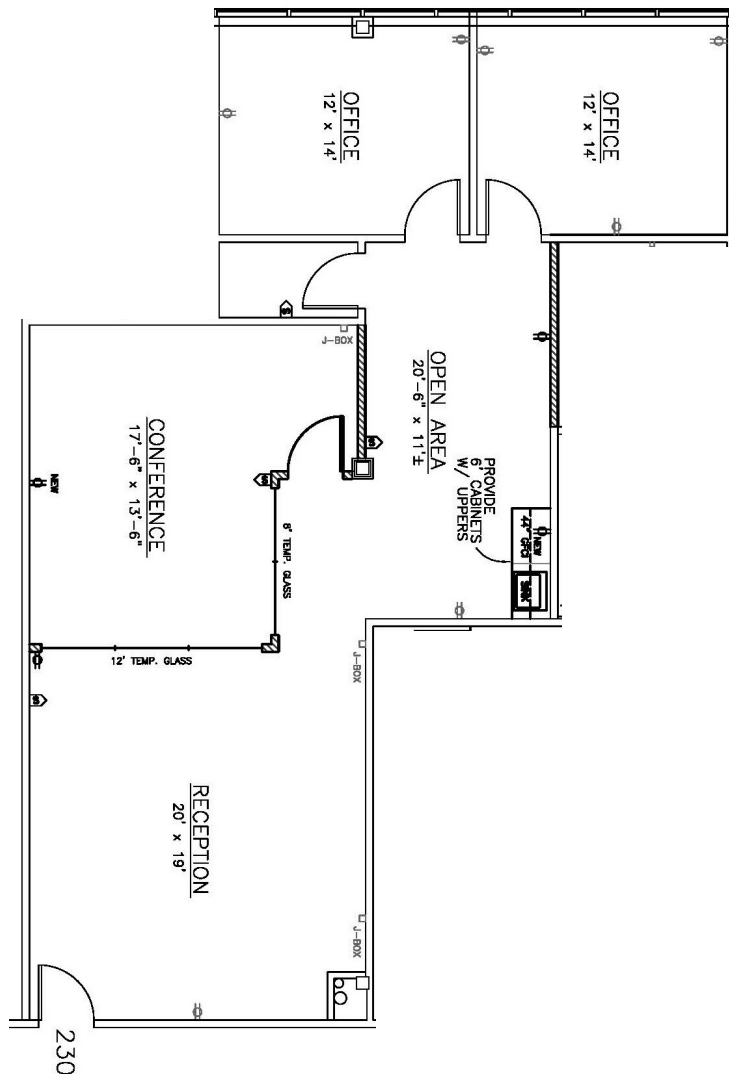


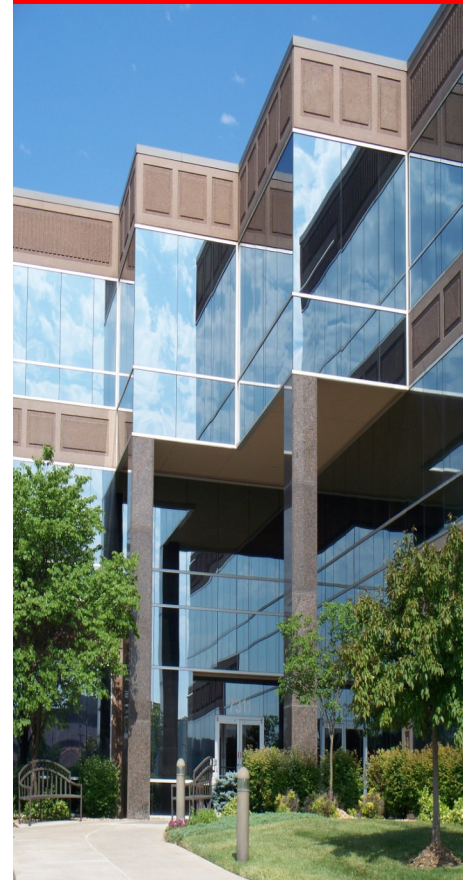


Building X11A 7200 W. 132nd St.

1,452 sq. ft.



**New to Market
Great Location Close
to Amenities
2 Windowed Offices
On-Site
Management**



*Elaine Sicht
Kathy Woodward, SIOR*
DDI COMMERCIAL, INC.
7200 West 132nd Street
Suite 300
Overland Park, KS 66213
P: 913.685.4100
F: 913.685.1232

Elaine@DDIRealty.com
KathyW@DDIRealty.com
DDICommercial@DDIRealty.com
www.SouthcreekOfficePark.com

- * On-site leasing, management & ownership
- * Cost-effective building designs
- * Professional floor plan development
- * Custom interior design services
- * General contracting by Southcreek
- * Flexible expansion options
- * Convenient parking
- * Excellent location
- * Beautiful park settings
- * Commitment to your needs