

WHAT'S UP AT THE CREEK?

The Community Newsletter of Southcreek Office Park

Happy Anniversary! The Park is celebrating the following anniversaries this month. We thank each of you for choosing Southcreek Office Park and look forward to providing many years of quality leasing services and property management to you and your staff... Here's our **January** Anniversary Crew!

Michael Bizal, CPA (1/1998)

Humana Health Plan, Inc. (1/2004)

Blue Valley Insurance, Inc. (1/2005)

Utz & Lattan, LLC (1/2005)

Finite Engineering Associates (1/2007)

Alta Risk, LLC (1/2014)

Northstar Marketing, Inc. (1/2014)

Garver, LLC (1/2014)

VOSCO/Preferred Concepts, LLC (1/2014)

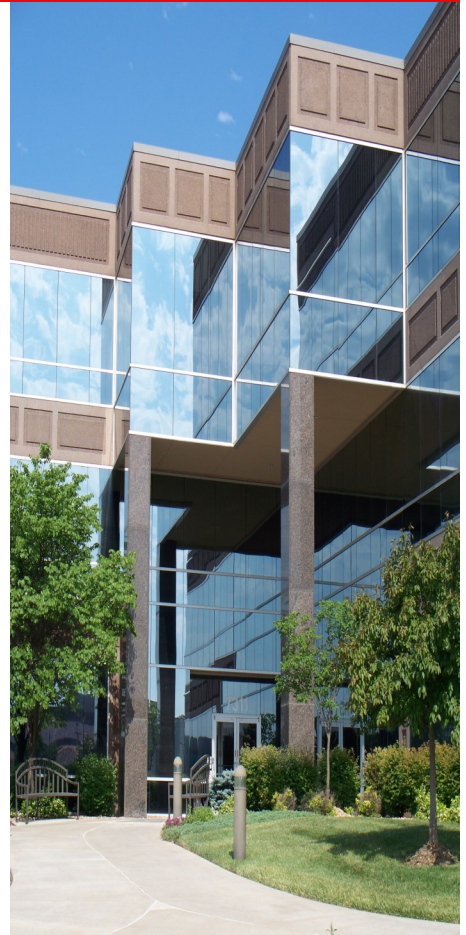
Edward Jones (1/2015)

iDatalytics, LLC (1/2016)

Blue Water USA, Inc. (1/2017)

AASPA (1/2019)

Inlanta Mortgage, Inc. (1/2019)



Fun Holidays in January...

January 4 = National Spaghetti Day

January 15 = National Bagel Day

January 20 = National Cheese Lover's Day

January 23 = National Pie Day

January 27 = Chocolate Cake Day

Join Us in Welcoming...

We are honored to have the following tenant join us in Southcreek Office Park!

DAS Acquisition Company, LLC (1/20)

Flat Branch Mortgage, Inc. (2/20)

Seasonal Reminder... When snow is in the forecast, please remember there will be a great deal of activity going on behind the scenes here at the park.



Please try to accommodate the snow plows (during weeknight and weekend hours) by making sure your vehicle is not left in the lot overnight. When working odd hours in the evening or on the weekends, please relocate your vehicle in a spot close to a curb. This will allow the plows better access to the entire lot for plowing and surface treatment. Please also advise everyone in your office that snow plowing will not occur until snow reaches a depth of 2" on the surface of the parking lots.

Walkways and entrances will, of course, be treated as necessary. It is our standard policy to treat the walkways and entrances in advance (when we know a storm is on its way), first thing each morning, and throughout the day as needed.



We will always try our best to keep the lots and walkways in the best winter conditions possible, but alas, even Southcreek Office Park is not immune from the effects of ice and snow during the winter season.

