



# WHAT'S UP AT THE CREEK?

The Community Newsletter of Southcreek Office Park

**Happy Anniversary!** The Park is celebrating the following anniversaries this month. We thank each of you for choosing Southcreek Office Park and look forward to providing many years of quality leasing services and property management to you and your staff... Here's our **February** Anniversary Crew!

Kaster Architects, Inc. (2/95)

American Heritage Life Ins. Co. (2/00)

Harry J. Lloyd Charitable Trust (2/00)

VALIC (2/00)

Bryan Cave Leighton Paisner, LLP (2/03)

Cushman Wakefield (2/07)

C&L Management/Senior Helpers (2/10)

Woodbridge Homes, Inc. (2/10)

ACE American Ins. Co. / CHUBB (2/13)

AD Banker & Company, LLC (2/15)

Woodforest National Bank (2/16)

American Diabetes Assoc. (2/2018)

Iris TeleHealth (2/2018)

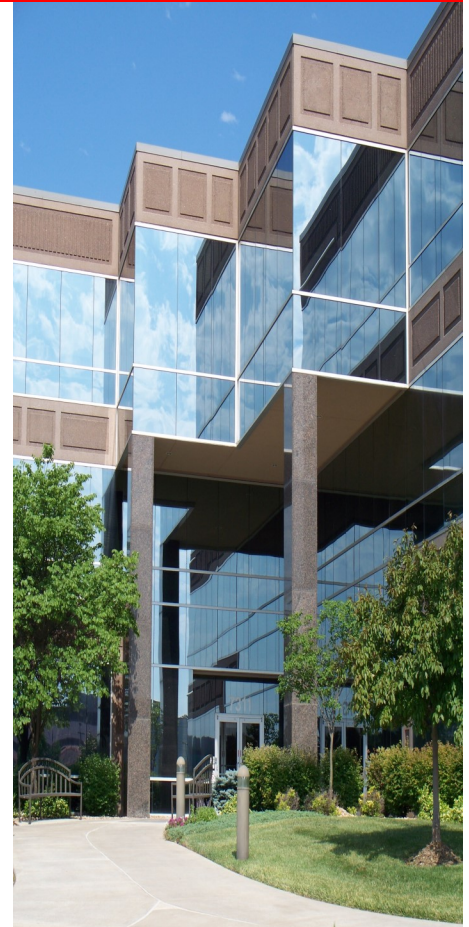


# GO CHIEFS!

## February Calendar:

Black History Month  
American Heart Month

- 2/01/20 = National Freedom Day
- 2/02/20 = Groundhog Day
- 2/12/20 = Lincoln's Birthday
- 2/14/20 = St. Valentine's Day
- 2/17/20 = President's Day
- 2/22/20 = Washington's Birthday
- 2/25/20 = Mardi Gras—Fat Tuesday
- 2/26/20 = Ash Wednesday



## Join Us in Welcoming:

We are honored to have the following tenant join us in Southcreek Office Park!

**Flat Branch Mortgage, Inc. (2/20)**

**If You Know** anyone interested in office space? Please have them contact Elaine Sight or Kathy Woodward, SIOR of DDI Commercial, Inc.

You may also visit us online at [www.ddicommercial.com](http://www.ddicommercial.com).

Our offices are located at:

7200 West 132<sup>nd</sup> Street, Suite 300  
Overland Park, KS 66213

Telephone (913)-685-4100—Fax (913) 685-1232

E-Mail [ddicommercial@ddirealty.com](mailto:ddicommercial@ddirealty.com)

Don't forget to check out the official website for Southcreek Office Park for the latest pictures, information about the property, or to view and/or download the latest newsletter!

[www.SouthcreekOfficePark.com](http://www.SouthcreekOfficePark.com)



## Bizarre & Unique February Holidays:

Canned Food Month  
National Cherry Month  
National Grapefruit Month  
An Affair to Remember Month

- 02/04 = Thank a Mailman Day
- 02/06 = Lame Duck Day
- 02/16 = Do a Grouch a Favor Day
- 02/17 = Random Acts of Kindness Day
- 02/24 = National Tortilla Chip Day
- 02/27 = Polar Bear Day

## February Happenings Around Town:

- 2/14—2/16 = Kansas City Golf Show, OP Convention Center [www.kansascitygolfshow.com](http://www.kansascitygolfshow.com)
- 2/21—2/23 = World of Wheels [www.autorama.com](http://www.autorama.com)
- 2/22—2/23 = Monster Jam, Sprint Center [www.sprintcenter.com](http://www.sprintcenter.com)
- 2/28—3/01 = Overland Park RV & Outdoor Show 2020 [www.opconventioncenter.com](http://www.opconventioncenter.com)
- 2/29—3/01 = PBR—Professional Bull Riders [www.sprintcenter.com](http://www.sprintcenter.com)

February 2020  
Volume 24—Issue 2

[www.SouthcreekOfficePark.com](http://www.SouthcreekOfficePark.com)