



WHAT'S UP AT THE CREEK?

The Community Newsletter of Southcreek Office Park

Happy Anniversary! The Park is celebrating the following anniversaries this month. We thank each of you for choosing Southcreek Office Park and look forward to providing many years of quality leasing services and property management to you and your staff...

Here's our **December** Anniversary Crew!

ONEOK/Kansas Gas Service (12/1997)

The Hanover Insurance Co. (12/2009)

Transaction Network Services, Inc. (12/10)

Vulcraft Sales Corp. (12/13)

First Community Mortgage, Inc. (12/14)

Innova Consulting, LLC—(12/15)

DR/Decision Resources, LLC (12/16)

Coffelt Land Title, Inc. (12/18)

Drake Development, LLC (12/18)

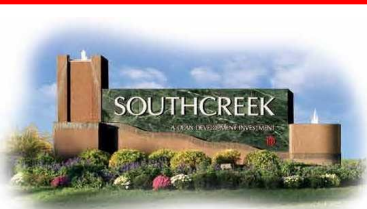
RLI Insurance Company (12/18)

Benefit Services of Kansas City (12/19)

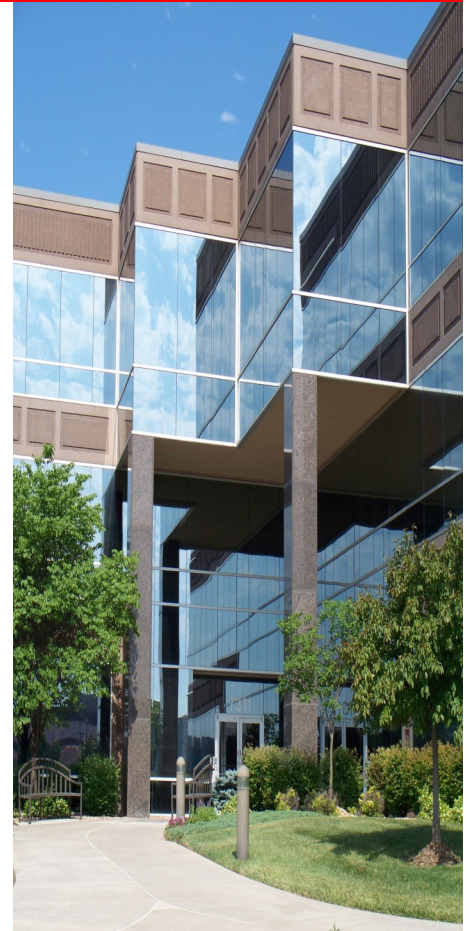
DMG MORI (12/19)

RiverPoint, Inc. (12/19)

Universal Registered Agents, Inc. (12/19)



Wishing you and your family the best of the Holiday Season. All of us in the Management Office for Southcreek Office Park thank you for being part of our wonderful community. We look forward to an exciting 2021!



2020 Southcreek Turkey Giveaway...



Congratulations go to the 36 Southcreek Office Park winners of this year's contest! Don't forget to pick up your winning certificate before December 11, 2020!



<http://www.kesantarun.com/>

Southcreek Office Park is home to the 12th Annual Great Santa Run 5K & Little Elves Fun Run this year on December 6, 2020.

Join Us in Welcoming...

We are honored to have the following tenant join us in Southcreek Office Park!

Coffman Associates (12/2020)



'On Board' at Southcreek... Please contact our Property Manager at (913) 685-4100 for more details or to place an item or service onto the board. Although Southcreek Office Park does not recommend, endorse, or warrant any services or products attached to this newsletter, we are pleased to provide this forum for our tenants. You can contact us either by telephone (913) 685-4100; or send an email to us at ddirealty@ddirealty.com. www.SouthcreekOfficePark.com



Check Out The Month's Specials...

Please review the special offers extended to readers of this newsletter:

Superior Moving & Storage 816-274-7026

December 2020
Volume 24—Issue 12
www.SouthcreekOfficePark.com

SUPERIOR[®]
MOVING & STORAGE



15% OFF*

Southcreek Office Park Special!

*15% off regular rates for Southcreek tenants.

- ▶ Commercial Relocation
- ▶ Residential Relocation
- ▶ Internal Office Moving
- ▶ Move Management Services
- ▶ Warehousing & Storage
- ▶ Modular Furniture Installation
- ▶ Packing Services
- ▶ FF&E

BRETT GORANFLO

Business Development Manager

direct: 816.274.7026 | cell: 816.560.1354

bgoranflo@superiormoving.com

Some of Our Clients

NETSMART	GARMIN	VA MEDICAL CENTER
SPENCER FANE	WELLSKY	KU MEDICAL CENTER
COUNTRY CLUB BANK	GSA	PRIME HEALTH SERVICES
SHOOK, HARDY & BACON	DST / SS&C	TRUMAN MEDICAL CENTER
MARRIOTT INTERNATIONAL	EVERGY	BLUE CROSS BLUE SHIELD KC
KANSAS CITY PUBLIC SCHOOLS	HCA	NORTH KANSAS CITY HOSPITAL



www.superiormoving.com

3177 Mercier St. | PO Box 414059 | Kansas City, MO 64111 | 816.471.1662

