



## WHAT'S UP AT THE CREEK?

The Community Newsletter of Southcreek Office Park

**Happy Anniversary!** The Park is celebrating the following anniversaries this month. We thank each of you for choosing Southcreek Office Park and look forward to providing many years of quality leasing services and property management to you and your staff... Here's our **January** Anniversary Crew!

**Michael Bizal, CPA (1/1998)**

**Blue Valley Insurance, Inc. (1/2005)**

**Utz & Lattan, LLC (1/2005)**

**Finite Engineering Associates (1/2007)**

**Alta Risk, LLC (1/2014)**

**Garver, LLC (1/2014)**

**Edward Jones (1/2015)**

**iDatalytics, LLC (1/2016)**

**AASPA (1/2019)**

**Inlanta Mortgage, Inc. (1/2019)**

**DAS Acquisition Company, LLC(1/2020)**

**White Commercial Corp (1/2021)**

**American Alliance (1/2022)**

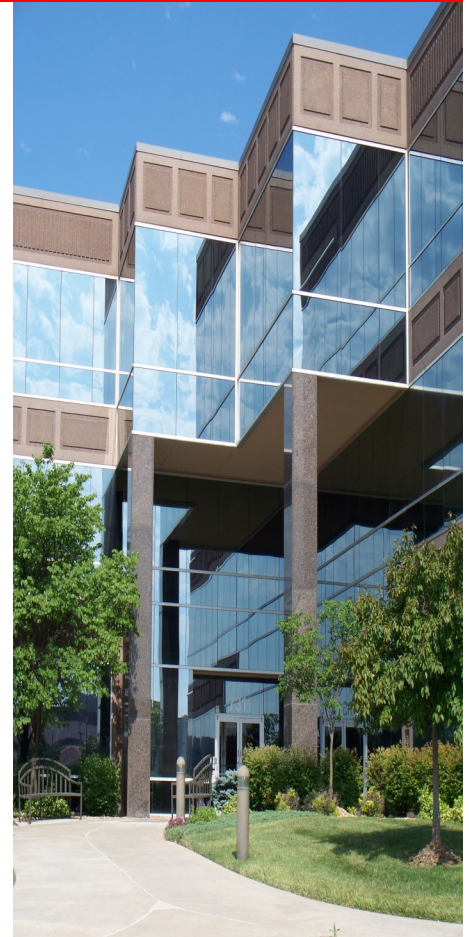
**Capital Resources (1/2022)**

**Trimble Investment Group (1/2022)**



### January Facts

- Flower: Carnation
- Birthstone: Garnet
- Zodiac signs:  
Dec. 22-Jan.19 Capricorn  
Jan. 20-Feb. 16 Aquarius
- January is known to be the coldest month in the Northern hemisphere and the warmest in the Southern hemisphere
- January was named after the Roman god Janus
- Julius Caesar added a 31st day to the month
- Ellis Island opened Jan.1, 1892



### Check Out This Month's Flyer...

Please review the special offer extended to readers of this newsletter from the following company:

Everfast Fiber Networks

[www.everfastfiber.com](http://www.everfastfiber.com)

### Join Us in Welcoming...

We are honored to have the following tenant join us in Southcreek Office Park!

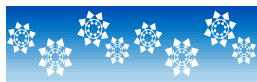
**Allied Business Solutions (12/2022)**

**Seasonal Reminder...** When snow is in the forecast, please remember there will be a great deal of activity going on behind the scenes here at Southcreek..



Please try to accommodate the snow plows (during weeknight and weekend hours) by making sure your vehicle is not left in the lot overnight. When working odd hours in the evening or on the weekends, please relocate your vehicle in a spot close to a curb. This will allow the plows better access to the entire lot for plowing and surface treatment. Please also advise everyone in your office that snow plowing will not occur until snow reaches a depth of 2" on the surface of the parking lots.

Walkways and entrances will, of course, be treated as necessary. It is our standard policy to treat the walkways and entrances in advance (when we know a storm is on its way), first thing each morning, and throughout the day as needed.



We will always do our best to keep the lots and walkways in the safest winter conditions possible, but alas, even Southcreek Office Park is not immune from the effects of ice and snow during the winter season.

### Fun Holidays in January...



- January 4 = Spaghetti Day
- January 15 = Bagel Day
- January 20 = Cheese Lover's Day
- January 23 = National Pic Day
- January 27 = Chocolate Cake Day



**January 2023**  
**Volume 27—Issue 1**  
[www.SouthcreekOfficePark.com](http://www.SouthcreekOfficePark.com)



## Break Up With Big Tech!



Choose an internet provider for your business that will build a custom solution and deliver Gig speed fiber to your staff. EverFast is your local provider and can provide support and pricing the large companies simply cannot. Formerly Everest, we are based in Lenexa, KS and are eager to show you what we can do for your productivity and your bottom line!

January & February Southcreek Business Park Special

**FREE Month of Service For**

**New Business Accounts at Southcreek**

[www.everfastfiber.com](http://www.everfastfiber.com)

[craig.bergeron@everfastfiber.com](mailto:craig.bergeron@everfastfiber.com)

913-226-2177