



## ***WHAT'S UP AT THE CREEK?***

The Community Newsletter of Southcreek Office Park

***Happy Anniversary!*** The Park is celebrating the following anniversaries this month. We thank each of you for choosing Southcreek Office Park and look forward to providing many years of quality leasing services and property management to you and your staff... Here's our **November** Anniversary Crew:

**McAuley & Crandall, PA (2001)**

**Boan, Connealy & Houlehan, LLC (2011)**

**Kansas Policy Institute (2012)**

**Foresite MSP, LLC (2013)**

**Uniformed Services Benefit Assn. (2014)**

**Hotel Management & Consulting, Inc. (2014)**

**Luder & Weist, LLC (2017)**

**ARC Therapy Services, LLC/Brookdale (2017)**

**Tax Lien Code, LLC (2022)**

### ***Southcreek's 17th Annual Thanksgiving giveaway...***



**Winners will be announced on  
November 10, 2023,  
via email.**

Each winner will receive one \$25  
Price Chopper gift card.

Watch your email to see if you  
are one of this year's winners!



..A Winter Wonderland at the grounds of the Kansas City Renaissance Festival! Enjoy twinkling lights, beautiful music, a visit with Santa and more as we transform Canterbury for the holidays. We'll even have a New Year's party!

A Kansas City Renaissance Festival event that runs  
Fridays-Sundays, 5:30pm-10pm  
(9pm on Sundays)  
November 24th to Dec. 31st  
Plus December 21st  
New Year's Eve: 5:30pm-1am

*See the attached flyer for an exclusive Southcreek tenant discount!*



### ***This Month's Specials...***

Please see the attached flyers  
for a special offers from:

**Business Data Services**

**Knights of Lights**

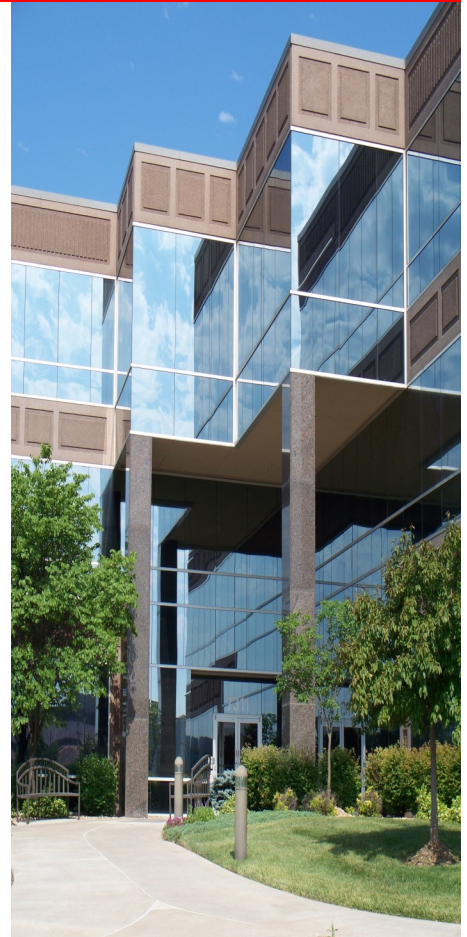
**Superior Moving & Storage**

**[TicketsatWork.com](http://TicketsatWork.com)**

### ***'On Board' at Southcreek...***

Please contact our Property Manager at (913) 685-4100 for more details or to place an item or service onto the board. Although Southcreek Office Park does not recommend, endorse, or warrant any services or products attached to this newsletter, we are pleased to provide this forum for our tenants.

You may contact us either by phone: (913) 685-4100;  
or email: [ddirealty@ddirealty.com](mailto:ddirealty@ddirealty.com).



**Daylight Savings Time  
Ends Sunday,  
November 5th**



**November 2023  
Volume 27—Issue 11  
[www.SouthcreekOfficePark.com](http://www.SouthcreekOfficePark.com)**

# Knights<sup>OF</sup> LIGHTS

[DDI Realty Services, Inc.](#)

Click the link above or use the QR code



Enter your password

**kolddi23**

(for \$15 adult tickets)

**kolddichild**

(for \$8 children's tickets)

Then 'Add Tickets'

(does not include \$3 processing fee)

Open Fri.-Sun., Nov. 24th-Dec. 31st

Plus Dec. 21st.

5:30pm-10pm (9pm Sun.)

Enter at Queen's Gate, 126th & State Ave.

Questions? Email [tickets@kcrenfest.com](mailto:tickets@kcrenfest.com)





**15% OFF\***

## Southcreek Office Park Special!

\*15% off regular rates for Southcreek tenants.

- |                            |                                  |
|----------------------------|----------------------------------|
| ▶ Commercial Relocation    | ▶ Warehousing & Storage          |
| ▶ Residential Relocation   | ▶ Modular Furniture Installation |
| ▶ Internal Office Moving   | ▶ Packing Services               |
| ▶ Move Management Services | ▶ FF&E                           |

BRETT GORANFLO

Business Development Manager

direct: 816.274.7026 | cell: 816.560.1354

bgoranflo@superiormoving.com

---

### Some of Our Clients

NETSMART	GARMIN	VA MEDICAL CENTER
SPENCER FANE	WELLSKY	KU MEDICAL CENTER
COUNTRY CLUB BANK	GSA	PRIME HEALTH SERVICES
SHOOK, HARDY & BACON	DST / SS&C	TRUMAN MEDICAL CENTER
MARRIOTT INTERNATIONAL	EVERGY	BLUE CROSS BLUE SHIELD KC
KANSAS CITY PUBLIC SCHOOLS	HCA	NORTH KANSAS CITY HOSPITAL



[www.superiormoving.com](http://www.superiormoving.com)

3177 Mercier St. | PO Box 414059 | Kansas City, MO 64111 | 816.471.1662





# Southcreek Office Park

SPECIAL OFFER

## REFER & REWARD WITH BUSINESS DATA SERVICES



Business Data Services is your trusted IT and cybersecurity partner, specializing in helping Kansas City businesses, from startups to \$10 million in revenue, create tailored tech strategies that boost income and safeguard profits.

**Refer & Earn:** Refer a company with 15+ computers, and they get a FREE Network or Cybersecurity Assessment worth \$8,997. You receive a \$250 reward or a \$250 charity donation post their initial appointment. If they become a client, you get their first month's charges as a check or donation.

**How to Refer:** Call 913-845-7440 or scan the QR code below to visit our referral program landing page. Join us in making tech solutions work for businesses. We look forward to serving you and your network!

### Special Referral Bonus For DDI Tenants:

You will get a FREE copy of our *Worry-Free IT* book. Just mention Southcreek





# Our Biggest Holiday Sale of the Year



## November Highlights

- Walt Disney World® Resort:** Save up to \$100 off gate prices
- Apple:** Receive preferred pricing on the latest products with Apple's Employee Purchase Program
- Rental Cars:** Hit the road and get up to 25% off the perfect car
- Hotels:** Save up to 60% off regular rates



### Holiday Shopping

Savings for everyone on your list this Black Friday, Cyber Week, and throughout the holiday season.

- **HP:** Save up to 55% on the latest products from HP
- **Lenovo:** Shop the Anniversary Sale and get up to 68% off



### Hosting at Home

Enjoy fantastic discounts when hosting holiday gatherings or watching the game with loved ones.

- **Sam's Club:** Enjoy more than a 60% discount on a new membership
- **Total Wine & More:** Save up to 15% off select wines



### Seasonal Travel

Planning a holiday escape? Delight in exclusive discounts for autumn adventures and festive travel.

- **Holiday Travel:** Save up to 20% on international and domestic flights
- **Theme Parks:** Unlock savings of up to 60% at parks nationwide

## ticketsatwork

Make the most of your TicketsatWork membership! Get instant access to exclusive deals, limited-time offers and members-only perks on the products, services and experiences you need and love. With something to excite every interest, it's time to spend less and enjoy more this season.

## New to TicketsatWork? Getting Started is Easy.

- 1 Visit [TicketsAtWork.com](https://TicketsAtWork.com)
- 2 Click *Become a Member*
- 3 Enter your company code or work email to create an account

COMPANY CODE

WOFDEAN

NEED HELP? CALL US: 1-800-331-6483 • EMAIL US: [CUSTOMERSERVICE@TICKETSATWORK.COM](mailto:CUSTOMERSERVICE@TICKETSATWORK.COM)

\*Prices and Offers are subject to availability and subject to change without notice. Please review the terms and conditions for offers.