



WHAT'S UP AT THE CREEK?

The Community Newsletter of Southcreek Office Park

Happy Anniversary! The Park is celebrating the following anniversaries this month. We thank each of you for choosing Southcreek Office Park and look forward to providing many years of quality leasing services and property management to you and your staff... Here's our **January** Anniversary Crew!

Michael Bizal, CPA (1/1998)

Blue Valley Insurance, Inc. (1/2005)

Alta Risk, LLC (1/2014)

Garver, LLC (1/2014)

Edward Jones (1/2015)

iDatalytics, LLC (1/2016)

AASPA (1/2019)

Inlanta Mortgage, Inc. (1/2019)

DAS Acquisition Company, LLC(1/2020)

White Commercial Corp (1/2021)

American Alliance (1/2022)

Capital Resources (1/2022)

Trimble Investment Group (1/2022)

American Broadband Holding Co. (1/2023)

Arise CPA Services (1/2023)

Paths Law Firm, LLC (1/2023)

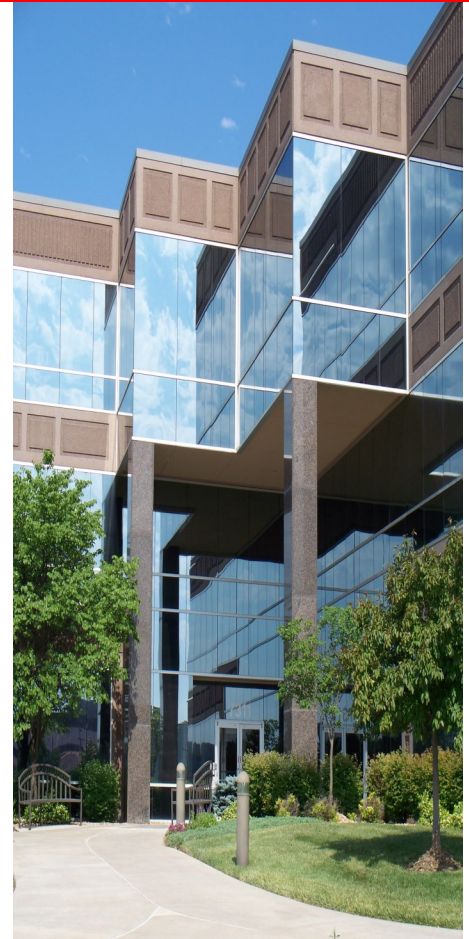


'On Board' at Southcreek...

Please contact our Property Manager at (913) 685-4100 for more details or to place an item or service onto the board.

Although Southcreek Office Park does not recommend, endorse, or warrant any services or products attached to this newsletter, we are pleased to provide this forum for our tenants.

You can contact us either by:
Telephone (913) 685-4100
Email us at ddirealty@ddirealty.com.



Join Us in Welcoming...

We are honored to have the following tenant join us in Southcreek Office Park!

The Stanley Agency, LLC (1/2024)

Seasonal Reminder... When snow is in the forecast, please remember there will be a great deal of activity going on behind the scenes here at Southcreek..



Please try to accommodate the snow plows (during weeknight and weekend hours) by making sure your vehicle is not left in the lot overnight. When working odd hours in the evening or on the weekends, please relocate your vehicle in a spot close to a curb. This will allow the plows better access to the entire lot for plowing and surface treatment. Please also advise everyone in your office that snow plowing will not occur until snow reaches a depth of 2" on the surface of the parking lots.

Walkways and entrances will, of course, be treated as necessary. It is our standard policy to treat the walkways and entrances in advance (when we know a storm is on its way), first thing each morning, and throughout the day as needed.

We will always do our best to keep the lots and walkways in the safest winter conditions possible, but alas, even Southcreek Office Park is not immune from the effects of ice and snow during the winter season.



Check Out This Month's Flyer...

Please review the special offer extended to readers of this newsletter from the following company: **TFL** www.ticketsforless.com



January 2024
Volume 28—Issue 1

www.SouthcreekOfficePark.com



TICKETS FOR LESS



EXCLUSIVE DISCOUNTS

Use code **SOUTHCREEK** to
get \$25 off your next order

TICKETSFORLESS.COM

SPORTS

CONCERTS

THEATER

GET YOUR CHIEFS, ROYALS, MIZZOU, KU or K-STATE TICKETS TODAY!

OFFER ONLY VALID ON QUALIFYING ORDERS OF \$100 OR MORE. LIMIT ONE USE PER CUSTOMER.