



WHAT'S UP AT THE CREEK?

The Community Newsletter of Southcreek Office Park



Happy Anniversary! The Park is celebrating the following anniversaries this month. We thank each of you for choosing Southcreek Office Park and look forward to providing many years of quality leasing services and property management to you and your staff... Here's our **February** Anniversary Crew!

Kaster Architects, Inc. (2/95)

VALIC (2/00)

Bryan Cave Leighton Paisner, LLP (2/03)

Geer Homes, Inc. (2/10)

AD Banker & Company, LLC (2/15)

Woodforest National Bank (2/16)

**Kreamer Kincaid Taylor Lipsman Arney
Wait & Bottaro, LLC (2/21)**

LIMRA Solutions, LLC (2/22)

Scout Financial Group (2/22)

Social House Entertainment, LLC (2/22)

Clear Faith Capital, LLC (2/23)

Gerber Insurance Group (2/23)

Bizarre & Unique February Holidays:

Canned Food Month

National Cherry Month

National Grapefruit Month

An Affair to Remember Month

02/04 = Thank a Mailman Day

02/06 = Lame Duck Day

02/16 = Do a Grouch a Favor Day

02/17 = Random Acts of Kindness Day

02/24 = National Tortilla Chip Day

02/27 = Polar Bear Day

Check Out This Month's Flyer... ✓

Please review the special offer extended to readers of this newsletter from the following company:

Superior Moving & Storage

816-274-7026

'On Board' at Southcreek...

Please contact our Property Manager at (913) 685-4100 for more details or to place an item or service onto the board.

Although Southcreek Office Park does not recommend, endorse, or warrant any services or products attached to this newsletter, we are pleased to provide this forum for our tenants.

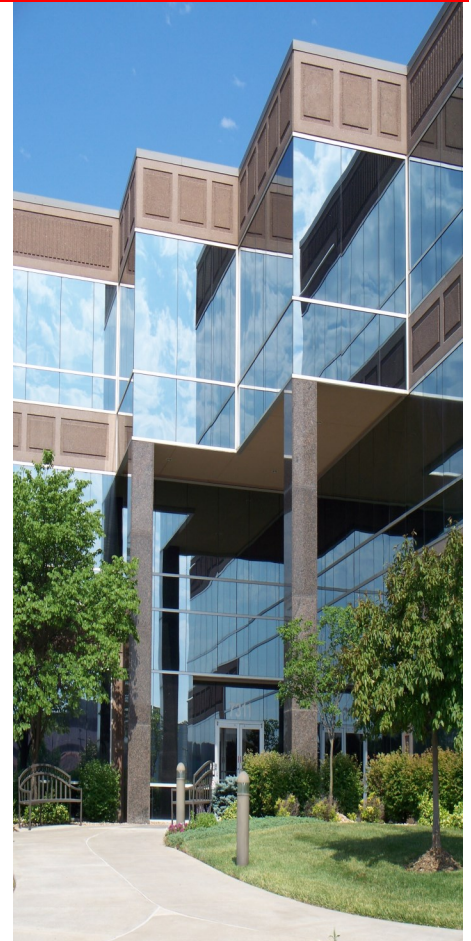
You can contact us either by:

Telephone (913) 685-4100

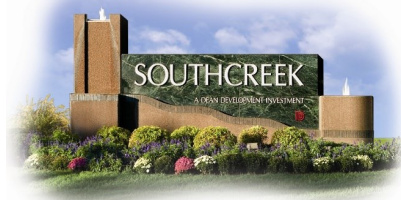
Fax us at (913) 685-1232

Email us at

ddirealtv@ddirealtv.com.



GO CHIEFS!



"Happiness is not something you postpone for the future; it is something you design for the present."

~Jim Rohn

February 2024
Volume 28—Issue 2

www.SouthcreekOfficePark.com

SUPERIOR[®]
MOVING & STORAGE



15% OFF*

Southcreek Office Park Special!

*15% off regular rates for Southcreek tenants.

- ▶ Commercial Relocation
- ▶ Residential Relocation
- ▶ Internal Office Moving
- ▶ Move Management Services
- ▶ Warehousing & Storage
- ▶ Modular Furniture Installation
- ▶ Packing Services
- ▶ FF&E

BRETT GORANFLO

Business Development Manager

direct: 816.274.7026 | cell: 816.560.1354

bgoranflo@superiormoving.com

Some of Our Clients

NETSMART	GARMIN	VA MEDICAL CENTER
SPENCER FANE	WELLSKY	KU MEDICAL CENTER
COUNTRY CLUB BANK	GSA	PRIME HEALTH SERVICES
SHOOK, HARDY & BACON	DST / SS&C	TRUMAN MEDICAL CENTER
MARRIOTT INTERNATIONAL	EVERGY	BLUE CROSS BLUE SHIELD KC
KANSAS CITY PUBLIC SCHOOLS	HCA	NORTH KANSAS CITY HOSPITAL



www.superiormoving.com

3177 Mercier St. | PO Box 414059 | Kansas City, MO 64111 | 816.471.1662

