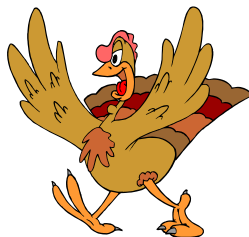




WHAT'S UP AT THE CREEK?

The Community Newsletter of Southcreek Office Park

Happy Thanksgiving!



8th Annual Turkey Giveaway...

Sign-up deadline is November 1, 2013. Winners will be announced on November 13, 2013

The drawing is open to ALL CURRENT EMPLOYEES working within buildings managed by DDI Realty Services, Inc. within Southcreek Office Park.

If your office did not receive the Turkey Ticket Form, please call or email our office (913-685-4100, ddirealty@ddirealty.com) and we will fax or email the form to you. Remember, one entry per person, please. Up for grabs this year are **40 turkeys!** **Good luck!**



Harvesters Food Drive... Southcreek Office Park is currently hosting a food drive which will end on November 14, 2013. You are invited to help fill the barrels that will be located inside the lobby areas of each building managed by DDI Realty Services, Inc. within Southcreek during this food drive.

Some of the most needed items this year are: canned vegetables/fruit; boxed meals; canned meat/tuna; peanut butter; canned soup; cereal – hot/cold; soap; deodorant; shampoo and toilet paper.

Southcreek is also hosting a virtual food drive for your shopping convenience. All you have to do to participate is click on the following link to do your shopping online: www.southcreek.harvesters.org.

Thanks to everyone in advance for helping feed the area hungry this season!

Happy Anniversary!



The Park is celebrating the following anniversaries this month. We thank each of you for choosing Southcreek Office Park and look forward to providing many years of quality leasing services and property management to you and your staff... Here's our **November** Anniversary Crew!

Protective Life (11/95)

CIENA Communications, Inc. (11/00)

McAuley & Crandall, PA (11/01)

Natgun Corporation (11/02)

Central States Thermo King/Velocity (11/07)

Paul Binner, dba All State Agent (11/08)

Sandberg Phoenix vonGontard (11/09)

VHA, Inc. (11/09)

Softchoice Corporation (11/10)

Boan & Connealy, LLC (11/2011)

Employee Benefit Professionals (11/12)



Please Join Us in Welcoming:  The following

tenant will be arriving in November. We are honored to have you join us here at Southcreek!

Cannon Group Enterprises (11/13)

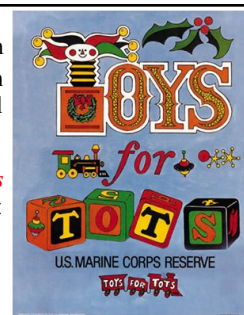
Foresite MSP, LLC (11/13)



Toy Drive: Southcreek Office Park is co-hosting a toy drive with the US Marine Corps Reserve and the American Legion Riders from Chapter 19 again this year! Look for donation boxes to appear in all building lobbies managed by DDI Realty Services, Inc.!

Anyone can participate by: 1) donating a new unwrapped \$10 toy and dropping it in the nearest **Toys For Tots** box or; 2) by personal or company check made out to **Toys For Tots** and either dropping it by or mailing it to: DDI Realty Services, Inc., 7200 W. 132nd St, #300, Overland Park, KS 66213.

For more information about **Toys for Tots**, please visit www.toysfortots.org.



Experience Southcreek



Fall Back

Daylight Savings Time ends on Sunday, November 3, 2013



Advertiser's Specials...

Please review the attached flyers with special offers extended to readers of this newsletter from the following companies (in alphabetic order):

Silver Dollar City

www.sdticketoffers.com

SpringHill Suites by Marriott

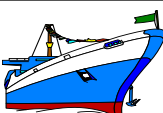
913-491-0010

Sprint Center Specials

816-949-7147

'On Board' at Southcreek:

Please contact our Property Manager at (913) 685-4100 for more details or to place an item or service onto the board. Although Southcreek Office Park does not recommend, endorse, or warrant any services or products attached to this newsletter, we are pleased to provide this forum for our tenants. You can contact us either by telephone (913) 685-4100; fax us at (913) 685-1232, or send an email to ddirealty@ddirealty.com.



Please check out Southcreek Office Park's **Featured Suite** on the attached flyer / floor plan and give us a call if you would like more information or to arrange a tour! **913-685-4100**

November Calendar:

American Diabetes Month

Lung Cancer Awareness Month

National American Indian Heritage Month

National Adoption Month

11/01/13 = All Saints' Day

11/03/13 = Daylight Savings Time Ends

11/05/13 = Election Day

11/11/13 = Veterans Day

11/14-17/13 = 2013 Ararat Shrine Circus

11/14-17/13 = KC Holiday Boutique in Overland Park, KS

11/27/13 = Hanukkah

11/28/13 = Thanksgiving Day

11/29/13 = KC Mayor's Christmas Tree Lighting Ceremony

If You Know anyone interested in office space? Please have them contact Elaine Sicht or Kathy Woodward, SIOR of DDI Commercial, Inc. You may also visit us online at www.ddicommercial.com. Our offices are located at:

7200 West 132nd Street, Suite 300

Overland Park, KS 66213

Telephone (913)-685-4100—Fax (913) 685-1232

E-Mail ddicommercial@ddirealty.com

Don't forget to check out the official website for Southcreek Office Park for the latest pictures, information about the property, or to view and/or download the latest newsletter!

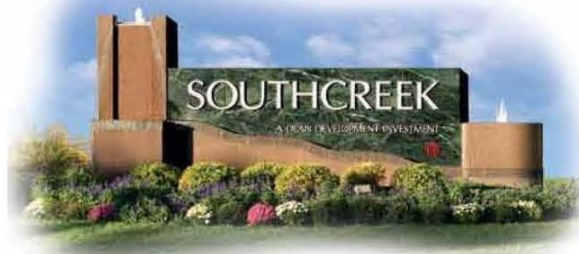
www.SouthcreekOfficePark.com



Did You Know: "In 1621, the Plymouth colonists and Wampanoag Indians shared an autumn harvest feast that is acknowledged today as one of the first Thanksgiving celebrations in the colonies. For more than two centuries, days of thanksgiving were celebrated by individual colonies and states. It wasn't until 1863, in the midst of the Civil War, that President Abraham Lincoln proclaimed a national Thanksgiving Day to be held each November."

[Source: <http://www.history.com/topics/thanksgiving>]





November's Featured Suite!

11,424 sq. ft.



Fabulous Class A Suite

**First Floor
Lobby Entrance**

**Custom Wood
Finishes**

**Exterior Building
Signage Available**

Fountain View



Building XIIA—7200 W. 132nd St.

*Elaine Sicht
Kathy Woodward, SIOR*
DDI COMMERCIAL, INC.

7200 West 132nd Street
Suite 300

Overland Park, KS 66213

P: 913.685.4100

F: 913.685.1232

Elaine@DDIRealty.com

KathyW@DDIRealty.com

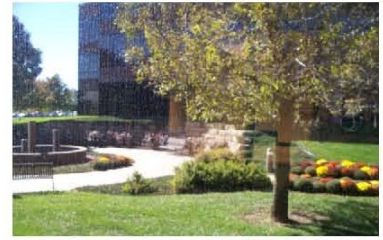
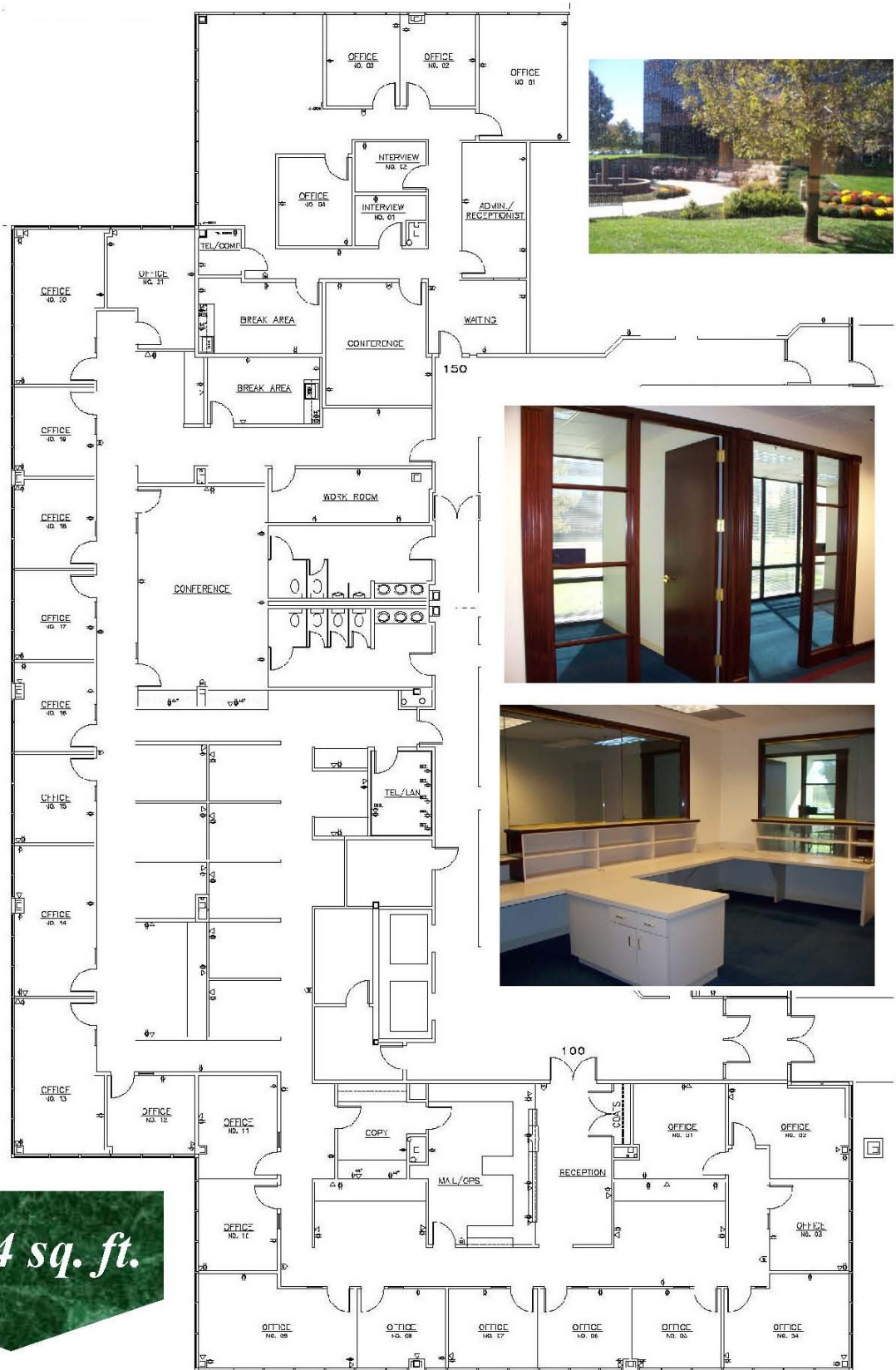
DDICommercial@DDIRealty.com

www.SouthcreekOfficePark.com

Visit us online: www.SouthcreekOfficePark.com!



11,424 sq. ft.



\$89.00 plus tax

*Call or go online today to make
your reservation and reference*

*"Grand Re-Opening
Promotion"!*

1-800-Marriott (800)-627-7468

www.marriott.com/mciss

(use corp/promotional code LPR)

** * **

All-Suite Hotel

King or Double Queen Suites

Sleeper Sofa in All Suites

Mini Refrigerator

Coffee Maker

Microwave

Complimentary Breakfast Buffet

Complimentary Wi Fi

37" Flat Screen TV HD with HBO

Newly expanded workout Area

Indoor Pool with outdoor patio

Marriott Rewards

Offer available thru January 31, 2014.

Some blackout dates will apply.

Limited availability.

Southcreek Office Park

SpringHill Suites by Marriott

Grand Re-Opening Promotion **\$89.00** plus tax

New Look! New Breakfast! Our renovation is now complete! We have a whole new look at the SpringHill Suites Kansas City Overland Park! Come experience our brand-new, fresh, contemporary suites with separate sleeping, eating and work areas, so you'll have room to get comfortable! We are conveniently located on the SW corner of 119th & Metcalf (Blue Valley Parkway).



12000 Blue Valley Parkway, Overland Park, Kansas

Features Include: Dream away on plush bedding with crisp linens, thick mattresses and fluffy pillows. Start the day with our all new hot breakfast buffet and free newspaper. Our all-suite hotel is just down the street from Sprint headquarters as well as key offices for Ericsson, OptumRx, Black & Veatch, Southcreek Office Park and College Blvd. We're also close to the Overland Park Soccer Complex, Oak Park Mall & Town Center Plaza. Reserve your suite today

Area Attractions: Overland Park Soccer Complex, Overland Park Convention Center, Overland Park Arboretum & Botanical Gardens, Deanna Rose Children's Farmstead, Ritz Charles Wedding & Event Venue, Country Club Plaza, Town Center Plaza, Worlds of Fun/Oceans of Fun, Oak Park Mall featuring Nordstrom's and The American Girl Store



Please call to arrange a tour

Sales Department **913-491-0010**

www.marriott.com/mciss



Get your tickets to these events on sale now!
OFFER CODE FOR ORDERING LINKS BELOW: property

*Tickets subject to availability/while supplies last *Please note: Handling fees may differ by event. Look for the handling fee noted on each event listing. *Questions? Call Heather, Monday-Friday (9:00am-5:00pm) 816-949-7147 or hfischer@sprintcenter.com

November 16 at 6:00 p.m.

Purchase on line at: <http://tiny.cc/collegeball>

Full Price:	Special Offer:	
\$52	\$52 (no discount)	Section 104-108 & 115-119
\$52	\$42	Section 103,109,114,120
*\$32	\$27	Section 102,121, 110-113
*\$22	\$17	Upper level (205-212/221-228)
\$12	\$12 (no discount)	Upper level (213-220/201-204,229-232)



***Available through on-line link.** Other price levels may be purchased by calling Heather at 816-949-7147.

*Handling fee: \$3 per ticket

*All Ages require a ticket

***Offer expires: November 9 at 5pm**

Wichita State, Brigham Young, DePaul and Texas

November 25-26, 2013

6:30pm at Sprint Center



Full Price	Special Offer:	
\$42	\$42	No discount Lower Level Straightaways
\$27	\$22	Lower Level End Zone

*\$42 tickets may be purchased by calling 816-949-7147 during regular business hours only.

***Offer expires: November 11th at 5pm**

Purchase on line at: <http://tiny.cc/cbeclassic>

*All fans require a ticket *\$1.25 per ticket handling fee

Find Furry Friendship!



Sesame Street Live at Sprint Center

January 9-12, 2014

Purchase on line at: <http://tiny.cc/SSL14>

*Thursday, Jan 9	6:30pm	*Opening Night Special: \$13
Friday, Jan 10	10:30am, 6:30pm	
Saturday, Jan 11	10:30am, 2pm, 5:30pm	
Sunday, Jan 12	1pm, 4:30pm	

***Opening Night Special – Thursday, January 9 at 6:30pm: All seats are \$13.00 (excluding Sunny Seats & Gold Circle Seats. Call Heather to purchase at 816-949-7147. Not available through link.**

Full Price:	Special offer:	(all lower level)
\$25	\$22	
\$17	\$14	

Handling fee: \$1.25 per ticket

Ages 1 & up require a ticket

Offer expires: Friday, January 3 at 5pm



Get your tickets to these events on sale now!
OFFER CODE FOR ORDERING LINKS BELOW: property

*Tickets subject to availability/while supplies last *Please note: Handling fees may differ by event. Look for the handling fee noted on each event listing. *Questions? Call Heather, Monday-Friday (9:00am-5:00pm) 816-949-7147 or hfisher@sprintcenter.com

Saturday, January 25th 2pm & 7pm

Purchase on line at: <http://tiny.cc/globes2014>

Full Price:	Special offer:
\$137.00	NO Discount
\$80.00	NO Discount
\$60.00	NO Discount
\$40.00	\$31.00
\$31.00	\$23.00
\$25.00	\$17.00



Handling fee: \$3 per ticket

Ages 2 & up require a ticket

Offer expires: January 17 at 5pm

*see link for seating chart



Friday, February 7	7:30pm
Saturday, February 8	2:00pm, 7:30pm
Sunday, February 9	2:00pm

Purchase on line at: <http://tiny.cc/mjam2014>

Full Price:	Special Offer:	Kids Ticket: (2-12 years old)
\$27	\$22	*\$12
\$22	\$17	*\$12

*Kids tickets available by calling Heather to place your entire order. Not available through on-line link.

Handling fee: \$3 per ticket

Ages 2 & up require a ticket

Offer expires: January 31 at 5pm

Thursday, March 27	7 PM
Saturday, March 29	7 PM
Sunday, March 30	1 PM & 5PM

*other show dates available at full price

Purchase on line at: <http://tiny.cc/DOI2014>

Full Price:	Special Offer:
\$57.00	None Ice A
\$47.00	None Ice B
\$40.00	None Lower Level A
\$24.00	\$20.00 Lower Level B
\$18.00	\$14.00 Lower Level C

*see link for seating chart



Handling fee: \$3 per ticket

Ages 2 & up require a ticket

Offer expires: March 17 at 5pm



An Old Time Christmas® November 2 – December 30

Don't miss a Top 5 spot to light up the Holidays! ~ *Good Morning America*

Bring your entire family to Branson's Silver Dollar City and celebrate the true meaning of this magical season amidst the glow of over 5 million dazzling lights. You'll take home beautiful holiday memories destined to last a lifetime!

The tastes of the season are in abundance during **An Old Time Christmas®**! Sit down to a hickory-smoked prime rib buffet, warm yourself with a bowl of hearty chili or satisfy your holiday sweet tooth with S 'mores, gingerbread cookies or an apple dumpling!
Weather permitting, your favorite rides and attractions will be open.

Plus, browse over two dozen unique shops including Jingle Bell Junction, located in the Frisco Barn, showcasing 80 themed trees, a variety of Christmas décor including snow globes, tableware, lighted collectibles and much more.

Taken in one or both of our musicals – *A Dickens' Christmas Carol* and *It's A Wonderful Life*. Don't miss **Christmas on Main Street** or the **Gifts of Christmas Holiday Light Parade** – just a few of the wonderful events during **An Old Time Christmas®**!

Visit www.silverdollarcity.com for more information and park schedules.

TICKETS... The Southcreek Management Office is participating in the ticket consignment program for **Silver Dollar City**. All consignment ticket purchases are offered again this year online.

Silver Dollar City 1-Day Consignment Ticket:

Adult = \$53.00 + tax

Child = \$43.00 + tax (Ages 4-11)

To purchase these tickets, please click on the link below. Click, then print off, the '**Additional Area Discounts**' and '**Print at Home Instructions**'. Then click '**Purchase Tickets**', enter the Corporate Promo Code below, then click '**Submit**' to receive our discounted rate, then proceed to check out and print your tickets.

If you have any questions, contact Chris at 913-685-4100.

Web Address: www.sdticketoffers.com—Corporate Promo Code: **13810**