



WHAT'S UP AT THE CREEK?

The Community Newsletter of Southcreek Office Park



Please Join Us in Welcoming:

The following tenants have arrived or will arrive soon in Southcreek Office Park. We are honored to have them join us!

Caliber Funding, LLC (5/13)

Senior Bridge Family Companies (5/13)

Global Tank Trailer Sales, Inc. (6/13)



Enjoy a Walk: Three times around the lake on the walking trail in Southcreek will give you bragging rights to having walked a mile!

Upcoming Event: Our neighbor in Southcreek Office Park — **Kansas Policy Institute**—is hosting their annual dinner with keynote speaker **Stephen Moore** on June 18, 2013. The event will be held at the Sheraton Overland Park Convention Center and starts at 6:00pm with a reception, followed at 6:45pm with a dinner.



**KANSAS POLICY
INSTITUTE**

Steve Moore is Senior Economics Writer at the Wall Street Journal and a member of their editorial board. He has tremendous inside knowledge of the inner workings of the federal government that you often won't hear in mainstream media. Steve will share his insight on major issues like sequestration, immigration, deficit spending and the insider deal making that drives Washington. You will also hear his thoughts on Kansas tax reform and other close-to-home issues.

Attached is an advanced registration form for this event. For more information, please contact 913.213.5038, email: events@kansaspolicy.org or visit their website, where you can also register online: www.KansasPolicy.org.

Happy Anniversary! The Park

is celebrating the following anniversaries this month. We thank each of you for choosing Southcreek Office Park and look forward to providing many years of quality leasing services and property management to you and your staff. Below is a list of our **May** Anniversaries!



Ford Land (5/96)

Howard Kalender, CPA (5/99)

Millennium Brokerage Group (5/99)

Spectrum Wealth Advisors (5/00)

The Wellington Group (5/00)

QBE The Americas / General Casualty (5/01)

Yohon Advisory Services (5/06)

CERAM Environmental, Inc. (5/07)

Gateway Solutions, Inc. (5/07)

Cereal Process Technologies (5/08)

Dean Capital Management, L.L.C. (5/08)

Wells Fargo Home Mortgage (5/08)

North & Associates, LLC (5/10)

Capital Relay, LLC (5/11)

Paul D. Cramm, Chartered (5/11)

Ameritas Life Insurance Corp. (5/12)

Snyder Insurance Services, Inc. (5/12)

VRS VeriClaim, Inc. (5/12)

Ticket Programs... The Southcreek Management Office (7200 W. 132nd St., Suite 300, Overland Park, KS) is participating in corporate consignment programs to sell tickets for the following venues:

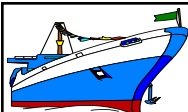


Schlitterbahn KC: <https://webhost.corecashless.com/schlitterbahn/kc/sales> = Promo Code: **DDIRS13**

Silver Dollar City / White Water: www.sdcticketoffers.com = Promo Code: **13810**

Worlds of Fun/Oceans of Fun: Southcreek Management Office: M-F 8:00-11:45am & 1:00-4:45pm Cash or Check Only

Showboat Branson Belle: Showboat Branson Belle Reservations Line: [855-769-4935](tel:855-769-4935) - Ask for Offer **#2002**



'On Board' at Southcreek:

Please contact our Property Manager at (913) 685-4100 for more details or to place an item or service onto the board. Although Southcreek Office Park does not recommend, endorse, or warrant any services or products attached to this newsletter, we are pleased to provide this forum for our tenants. You can contact us either by telephone (913) 685-4100; fax us at (913) 685-1232, or send an email to us at ddirealty@ddirealty.com.

May Calendar:

American Stroke Month
National Arthritis Awareness Month
Older Americans Month
National Asthma/Allergy Awareness Month
Melanoma/Skin Cancer Detection/Prevention Month

5/01 = Law Day
5/04 = Kentucky Derby
5/05 = Cinco De Mayo
5/06 = National Nurses' Day
5/07 = National Teachers' Day
5/08 = VE Day
5/12 = Mother's Day
5/15 = Nat'l Law Enforcement Memorial Day
5/18 = Armed Forces Day
5/26 = Indy 500
5/27 = Memorial Day Observed



If You Know

anyone interested in office space? Please have them contact Elaine Sight or Kathy Woodward, SIOR of DDI Commercial, Inc. You may also visit us online at www.ddicommercial.com. Our offices are located at:

7200 West 132nd Street, Suite 300

Overland Park, KS 66213

Telephone (913)-685-4100—Fax (913) 685-1232

E-Mail ddicommercial@ddirealty.com

Don't forget to check out the official website for Southcreek Office Park for the latest pictures, information about the property, or to view and/or download the latest newsletter!

www.SouthcreekOfficePark.com

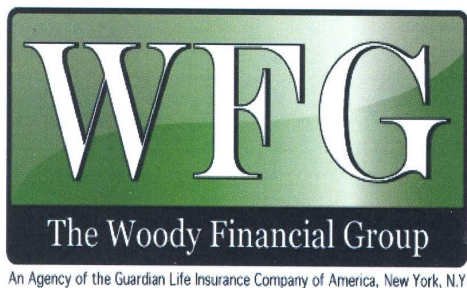
Check Out This Month's Specials:

Frank Ancona Honda	913.782.3636
Holiday Inn Express & Suites	913.681.8400
Kansas Policy Institute Annual Dinner	913.213.5038
Leukemia & Lymphoma Golf Tournament	913.905.2163
Sprint Center Events	816.949.7147
The Midland by AMC Events	816.949.7147
Worlds of Fun Tickets	913.685.4100

May Happenings Around Town...

- 5/03 = St. Luke's Books & Boutiques—<http://www.saintlukesgiving.org/booksandboutiques>
 5/03—5/04 = Overland Park Friends of the Arboretum Plant Sale—<http://www.artsandrec-op.org/arboretum/index.html>
 5/03—5/05 = 28th Brookside Art Annual—<http://www.brooksidekc.org/>
 5/04 = Big Shoal Bonnet Festival—<http://www.gladstone.mo.us/>
 5/04—5/05 = Spring Plant Sale at Powell Gardens—www.powellgardens.org
 5/15 = Job News—Overland Park Convention Center—<https://www.jobnewsusa.com/KC/>
 5/17—5/18 = Downtown Art Annual—<http://www.powerandlightdistrict.com/>
 5/25—9/02 = "Curious George™: Le's Get Curious!" Crown Center—www.crowncenter.com
 5/26 = Bank of America Celebration at the Station—<http://www.kcsymphony.org/celebration>





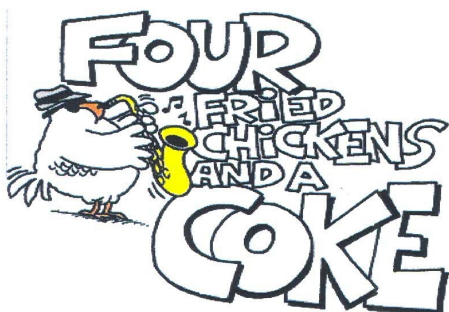
JOIN TEAM WOODY TO HELP **FIGHT** LEUKEMIA

JOIN US FOR OUR **1ST ANNUAL**
GOLF TOURNAMENT, DINNER AND CONCERT BY
"FOUR FRIED CHICKENS AND A COKE"



**LEUKEMIA &
LYMPHOMA
SOCIETY®**

fighting blood cancers



WHEN: Friday June 21, 2013

WHERE: Deer Creek Golf Course
7000 W 133rd St.
Overland Park, KS

TIME: Shot Gun Start at 1:30pm
Silent Auction 1:30 to 7:30
Cocktail Hour 6:00 to 7:00
Dinner served 6:30

COST: Band will play 7 to 9
\$ 150 pp FOR **ALL** EVENTS
\$ 125 pp For just golf
\$ 50 pp for dinner / concert

Team Members Name

Contact Info

Amount Paid

- 1.) _____
- 2.) _____
- 3.) _____
- 4.) _____

TEAM DEADLINE: FRIDAY JUNE 7, 2013



Please make checks payable to:

Woody Financial Group

Mail payments to:

The Woody Financial Group

Attn: Sue Howard

7311 W 130th Suite 130

Overland Park, KS 66213



ALL PROCEEDS TO BENEFIT THE LEUKEMIA AND LYMPHOMA SOCIETY

Advance Registration



Kansas Policy Institute Annual Dinner with
keynote speaker from the Wall Street Journal

Stephen Moore

Senior Economics Writer and
member of the editorial board at WSJ

Tuesday, June 18, 2013

6:00 p.m. Reception ~ 6:45 Dinner
Sheraton Overland Park Convention Center

Please call 913.213.5038 for more information or
regarding available sponsorships.

☐ **Personal Freedom Champion** \$3,500 (\$2,300 tax-deductible)

- Premier dinner seating for 16 guests (2 tables of 8)
- 8 tickets to VIP Reception (with Stephen Moore)
- Premier listing of individual and/or corporate name with logo in event program and presentation

☐ **Free Market Benefactor** \$2,400 (\$1,800 tax-deductible)

- Preferred dinner seating for 8 guests
- 4 tickets to VIP Reception (with Stephen Moore)
- Listing of individual and/or corporate name with logo in event program and presentation

☐ **Limited Government Advocate** \$1,200 (\$600 tax-deductible)

- Reserved dinner seating for 8 guests
- 2 tickets to VIP Reception (with Stephen Moore)
- Listing of individual and/or corporate name in event program and presentation

☐ **Host Couple** \$500 (\$350 tax-deductible)

- Seating for 2 guests, dinner and general reception
- Listing in event program

☐ **Individual Tickets** \$100 (\$25 tax-deductible)

- Seating for 1 guest, dinner and general reception
- Please reserve _____ seat(s) x \$100 = \$ _____

☐ **I am unable to attend**, however, I am mailing my tax-deductible contribution of \$ _____

Name _____

Company _____

Address _____

City/State/Zip _____

Telephone _____

E-mail _____

Payment: Make checks payable to Kansas Policy Institute

☐ Check: Amount Enclosed \$ _____

☐ Please charge my:

☐ MasterCard ☐ Visa ☐ Discover ☐ American Express

Card Number _____

Signature _____

CVV Code _____

Exp. Date _____



**KANSAS POLICY
INSTITUTE**

Register online at: www.kansaspolicy.org/events

For more information contact: events@kansaspolicy.org • 913.213.5038 • fax 913.213.5359
12980 Metcalf, Suite 430 • Overland Park, Kansas 66213 • www.KansasPolicy.org



Ancona Business Advantage



Free oil change for tenants of Southcreek Office Park when a vehicle is purchased and this ad is brought at time of test drive.

Southcreek Office Park

Concierge Sales Process

- ◆ A personalized consultation to pinpoint your needs in a new or pre-owned vehicle.
- ◆ The vehicle that interests you can be brought to you at work or home for a test drive.
- ◆ Your trade-in vehicle can be appraised when the test drive occurs.
- ◆ An online credit application can be completed at your home.
- ◆ You only need to visit the dealership to finalize your purchase.

Contact our
Ancona Business Advantage
specialists for an appointment.

913-782-3636

Karen Judt
816-255-7273

Karenj.frankanconahonda@gs.reyrey.com



Conveniently located at the junction of I-69 Highway & 135th Street, our Overland Park hotel is just minutes from the new Overland Park Soccer Complex, Southcreek Office Park, Corporate Woods, Sprint, Black & Veatch, Seaboard, Johnson County Community College, KU-Edwards Campus and St. Luke's South Hospital. Our convenient highway access allows business and leisure travelers a gateway to any part of Kansas City within 30 minutes including area businesses and the Kansas City International Airport (MCI). Come enjoy area attractions such as Arrowhead Stadium, Kaufman Stadium, and Kansas Speedway with Hollywood Casino, Sporting Park, Schlitterbahn, Worlds of Fun, and The Kansas City Zoo.

Please be sure to ask for the Southcreek Office Park Rate when booking!



HOLIDAY INN EXPRESS & SUITES OVERLAND PARK

The brand new Holiday Inn Express & Suites Overland Park offers Spacious 100% non-smoking guest room with 1 King or 2 Queen Beds, Free wired and wireless high speed internet access, mini refrigerator, microwave, 32 inch flat panel HDTV, work desk with ergonomic chair, plush mattress and bedding, enhanced bath experience with granite finishes. Our Overland Park hotel offers the amenities you deserve including daily hot breakfast buffet, indoor heated pool, fitness center, 24 hour business center and flexible meeting space.

**Stay Smart and Welcome to the
Holiday Inn Express & Suites
Overland Park!**
7580 W 135th Street
Overland Park, KS 66223
913.681.8400





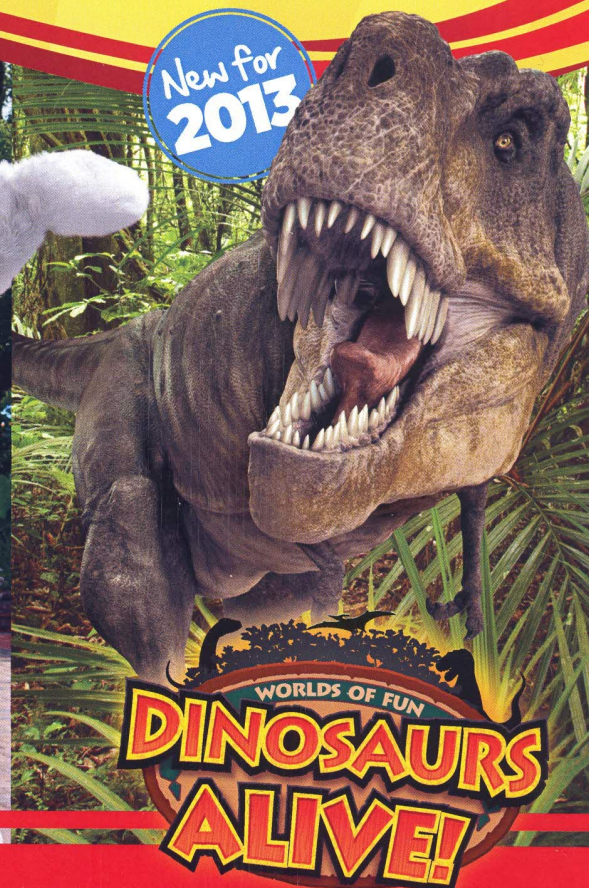
Worlds of Fun Oceans of Fun

One Park. One Price.



New for
2013

New for
2013



Get Your Exclusive Discount!

Worlds of Fun & Oceans of Fun: WOF opening day is April 13, 2013 – OOF opening day is May 25, 2013! The DDI Management Office (7200 W. 132nd St., Suite 300) is participating in the consignment program for Worlds and Oceans of Fun. Ages 2 and younger are free.

One Park/One Price Single-Day Ticket = \$36.00 (Regular admission = \$48.99 plus tax)

If you wish to purchase your tickets online, ticket price would be \$37.99 plus tax using our special [Promo Code: ddi13](#) (Retail \$48.99 plus tax). Other online purchase options include: \$5 Dinosaur ticket, parking pass, etc.

The Management Office is open M-F from 8:00-11:45am and 1:00-4:45pm. We accept cash or check. NO credit/debit cards.

worldsoffun.com • 816.454.4545 • Kansas City, MO

Get your discounted tickets to these events on sale now!

****For all Midland events, please call Heather at 816-949-7147****



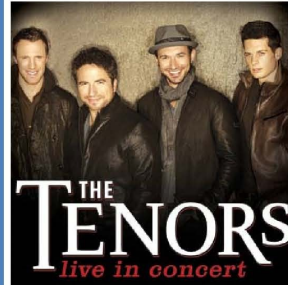
*Tickets subject to availability/while supplies last *\$1.25/ticket handling fee (unless otherwise noted)
 *Questions? Call Heather, Monday-Friday (9:00am-5:00pm) 816-949-7147 or hfisher@sprintcenter.com
 *Ages one and over require a ticket for Midland events.



**Saturday, May 4
 at 8:00 PM**
 (Doors open one hour prior)

Full Price: \$32.50 Special Offer: \$26.00 Reserved

*Offer expires May 1 at 5pm
 *No minimum purchase required



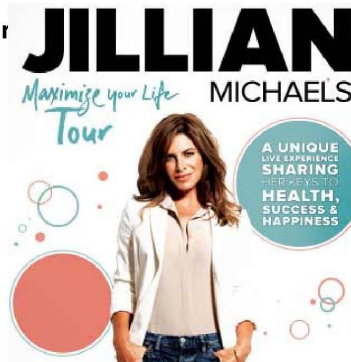
**Friday, May 10
 at 8:00 PM**

Full Price: \$39.50 Special Offer: \$31.60 (Reserved Floor)

*Offer expires: May 6 at 5pm
 *No minimum purchase required

**Jillian Michaels: Maximize Your Life Tour
 Sunday, May 12 at 6:30 PM**

A minimum of 8 tickets must be purchased as a group to receive the discount, so grab your friends, family or co-workers to take advantage of this offer!



***8 or more tickets must be purchased to receive this discount offer.**

Full Price:	Special Offer:
\$55	\$44 Floor 2-7
\$45	\$36 Balcony 1
\$35	\$28 Balcony 2 Center
\$29.50	\$23.60 Balcony 2 Side

*Offer expires May 9 at 5pm
 *One time \$10 handling fee on the entire order

Saturday, June 1 at 8:00pm

Full Price: \$39.50 Special Offer: \$31.60 Reserved Floor

*A minimum of 8 tickets must be purchased as a group to receive the discount, so grab your friends, family or co-workers to take advantage of this offer!
 *Offer expires May 28 at Noon



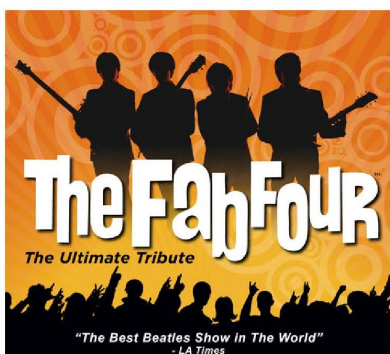
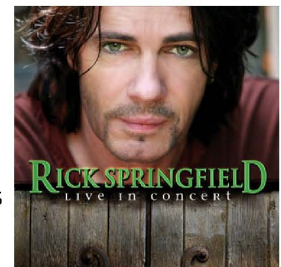
*One time \$10 handling fee on the entire order

Saturday, July 27 at 8:00pm

Offer expires: July 24 at 5pm

****Minimum 4 ticket purchase****

Full Price:	Special Offer:
\$79.50	\$63.60 Gold Circle
\$59.50	\$47.60 Reserved Floor 2- 5
\$39.50	\$31.60 Reserved Floor 6
\$29.50	\$23.60 Reserved Floor 7



Saturday, Oct 5 at 8:00PM

A minimum of 8 tickets must be purchased as a group to receive the discount, so grab your friends, family or co-workers to take advantage of this offer!

***8 or more tickets must be purchased to receive this discount offer.**

Full Price:	Special Offer (8 or more tickets)
\$25	*\$20 Reserved Floor

*Offer expires Oct 1 at 5pm (while supplies last)
 *One time \$10 handling fee on the entire order



Get your tickets to these events on sale now!
OFFER CODE FOR ORDERING LINKS BELOW: **property**

*Tickets subject to availability/while supplies last *\$1.25/ticket handling fee (unless otherwise noted)
*Questions? Call Heather, Monday-Friday (9:00am-5:00pm) 816-949-7147 or hfisher@sprintcenter.com

WWE Monday Night RAW - Monday, May 20 - 6:30pm



<u>Regular Price:</u>	<u>Special Offer Price:</u>
\$37	\$27 101, 122 rows A-M, 119
\$27	\$17 102-103, 120-121

*Offer expires: May 10th at 5pm (while supplies last)
*All fans require a ticket.

Purchase on line at: <http://tiny.cc/WWE2013>

See WWE RAW live and broadcast to the world from Kansas City! Witness all of your favorite superstars for one night only!

JOHN CENA, CM PUNK, RYBACK, DOLPH ZIGGLER, KANE, DANIEL BRYAN, THE MIZ, KOFI KINGSTON, THE DIVAS ...and many more!

Card is subject to change

Purchase on line at: <http://tiny.cc/cbecclassic>

Wichita State, Brigham Young, DePaul and Texas

November 25-26, 2013
6:30pm at Sprint Center



Full Price	Special Offer:	
\$42	\$42	No discount Lower Level Straightaways
\$27	\$22	Lower Level End Zone

*\$42 tickets may be purchased by calling 816-949-7147 during regular business hours only.

*Offer expires: November 11th at 5pm

*All fans require a ticket